



# HOME FRONT



## CREATING MORE SPACE TO CALL HOME

Debrah Constance, our founder, sure knew what she was doing when she named A Place Called Home. For the hundreds of kids that flood through our doors every day it is just that, a second home.

Did you know there are hundreds more on a waiting list, that cannot get in because we are out of room? We've turned every square inch into usable space—some of our offices used to be closets!—and at this point our facilities cannot safely accommodate any more members.

So... we have been dreaming, planning and fundraising, and we

are thrilled to be able to share some great news with you!

*APCH is Expanding to Serve More Young People and to Make Our Programs Even Better!*

It will happen gradually: Phase One will include a new Welcome Center/Lobby and urgently needed restrooms in our main building, as well as remodeling our warehouse across the street to become the APCH Annex, including a new Teen Center and a Gallery/Performing Arts Space. Our Dance, Music and Art De-

partments are bursting at the seams, and this will allow our young artists to take their creativity to a whole new level! Plus, we will share the gallery and theater space with the neighborhood, hosting community meetings and inviting local artists, musicians, dancers and theater productions to use the space regularly. We'll even have a movie screen!

With major investments from the Ahmanson Foundation, the Marion Brucker Trust, the Faith Family Trust, the W. M. Keck Foundation, and the Sherwood Family, we will break

*continued on page 14*

## OUR MISSION

A Place Called Home is a safe haven in South Central Los Angeles where underserved youth are empowered to take ownership of the quality and direction of their lives through programs in education, arts, and well-being and are inspired to make a meaningful difference in their community and the world.

## WHAT'S INSIDE

Executive Director Message	2
Programs	3-9
Alum Voices	9
Community	10
Events	11
List of Donors	12-14



## EXECUTIVE DIRECTOR'S MESSAGE



Every day we're assaulted with stories and interaction with disaster, cruelty, violence and atrocity. Some mornings that first encounter with the news of the day is so stressful that we want to pull the covers up and stay in a cocoon.

How do we protect ourselves in mind, body and spirit, and stay positive, engaged and openhearted? I think a lot about this for the young people at A Place Called Home. How can we help them develop into happy, healthy, productive adults who

love making the world a better place?

Of course, there are multiple answers—and APCH provides many programs to address the question, but studies show that the quality of our lives is deeply impacted by one very simple value: **Kindness**

Science has proved that doing good deeds for others reduces our own stress. Cornell University researchers following 427 women found that numbers of children, education, class, and work status did not affect health, but after 30 years, 52% of those

who did not volunteer had experienced a major illness, but only 36% of those who did volunteer had gotten sick.

There is a state of joy and well being that comes from giving to others. In fact, being kind and generous may actually lengthen your life. One study found a 44% reduction in early death among adults who volunteered a lot—a greater effect than exercising four times a week.

I can't say we have no stress, but all of the staff at APCH are happy and grateful that we can spend our days in service and kindness.

Whether at A Place Called Home or another nonprofit you believe in, I encourage you to volunteer, donate, spread the word—you will feel better and the world will, too!



Jonathan Zeichner  
Executive Director

## HOME

Walking through that door  
So many problems come  
to mind  
Look to my right  
My sister getting yelled at for  
getting pregnant  
Look to my left  
My nephew crying over many  
problems  
I try to get to my room as  
fast as I can,  
So that my grandmother  
doesn't see me  
I pass through these  
empty hallways  
As I touch my doorknob  
My aunt starts to yell  
—you shouldn't question god!  
You were born to a catholic  
family, you can't be atheist!  
I try, but somehow it gets  
to me.  
I had never thought that those  
thoughts would ever get to me.  
I button my smile to my face.  
I adjust my crazy laugh  
behind it.  
And I'll live like this.  
This isn't perfect  
Because nothing is  
But I'll use this to write my  
feelings out  
Although I have a lot of  
burning in my heart  
That fire is always extinguished  
by that one friend  
Who is more than a friend,  
she's a sister  
I could never replace you  
You understand  
You listen  
How can she hold back  
the tears  
As I write this, I tremble  
I feel that tear almost  
come out  
I can't hold it  
I must but I can't  
My father once told me  
"Never let anyone see you cry,  
because when they do, they'll  
know you're weak."  
  
— Anna, Age 12  
APCH Member



Come meet the friendly and dedicated staff at APCH. Sign up today to join one of our monthly tours: <http://bit.do/APCHTour>

## APCH STAFF NEWS!

APCH is about love and family, and we joyfully congratulate our Higher Education Coordinator **Beatriz Gutierrez**, and Operations Coordinator **La Shawnda Moore**, who both had babies in 2014; and Athletics Coach **Alex James** and Manager of Volunteer Engagement **Sarah Kimbrough**, who both got engaged (not to each other)! We'd also

like to welcome all our new staffers, including two fantastic VISTA volunteers: **Lena Smith & Dennis Hisamoto**. We're fortunate to attract such talented and dedicated staff and volunteers. If you're interested in working at APCH, please visit our website and click on EMPLOYMENT OPPORTUNITIES. We are growing, so check back often!



**We nurture our community's youth by instilling in them the knowledge, skills, and capabilities they need to overcome the odds associated with the neighborhood.**





## DIRECTOR OF PROGRAMS MESSAGE



Everyday we open our doors and hearts to this wonderful adventure called A Place Called Home. Everyday we have the incredible privilege to participate in and witness the flowering of young minds, and even their intense struggles to grow up whole and free. As an institution that has lived and breathed in the South Central

community for 21 years, we have seen the remarkable will of thousands of young people and families to not just survive, but to take hold of the sunlight, nurture seeds of opportunity, and overcome great challenges to fulfill their life's destiny. Our role is to inspire those dreams with art and music, strengthen them with academic support, physical fitness and fresh food, and support their journey into adulthood so they can walk confidently and competently in the world.

It's been an honor to be a part of this sacred work for the past five years.

Here is a small list of accomplishments: we've built a South Central Sports League; created a Digital Media Program to share stories through our lens; extended our Garden Program

with beautiful blossoms down Central Avenue, and launched an annual Health and Garden Expo; invited in wisdom keepers to support our mentoring pathways; grown our parent involvement with leadership circles and booster clubs; introduced Saturday training in music, dance, and art to usher our members towards advanced proficiency; and expanded our menu of teen programs, scholarships, and opportunities for international study abroad. I applaud everyone on this great team of service.

Tarabu Betserai Kirkland,  
Director of Programs



**APCH programs and services are delivered via five core departments:**

**Educational Services,**  
**Health, Nutrition & Well-being, Creative Expressions, Bridge to the Future, and Community Outreach & Volunteers**

## SUMMERTIME 2014 WAS AMAZING!



First of all, WE GOT OUR VERY OWN SCHOOL BUS! So, in addition to all our regular programs like Art, Dance, Athletics, Gardening, Music, Science, and more, we were in field trip heaven!

We provided 71 fun and educational summer field trips over eight weeks: 898 members attended trips in June, and 1164 members attended trips in July. Our superstar kitchen staff provided thousands of breakfasts, snacks and lunches to members on site and another 1500 to-go lunches for field trips to surf camp, the beach, a picnic/fun day in Griffith Park, museums, sailing, Catalina Island, snorkeling, horseback riding, hiking, performances and so much more!

One really cool collaboration was with the Environmental Learning Center, an educational facility at the Hyperion that teaches responsible water consumption. Our youth got to see how our water infrastructure works and learned great habits to conserve water, especially during droughts like the one we're experiencing right now.

Thanks to our generous supporters, we were able to provide a Summer to Remember for hundreds of young people in South Central—and in addition to all the fun, they went back to school better prepared and with new backpacks full of school supplies!





## EDUCATION=COLLABORATION



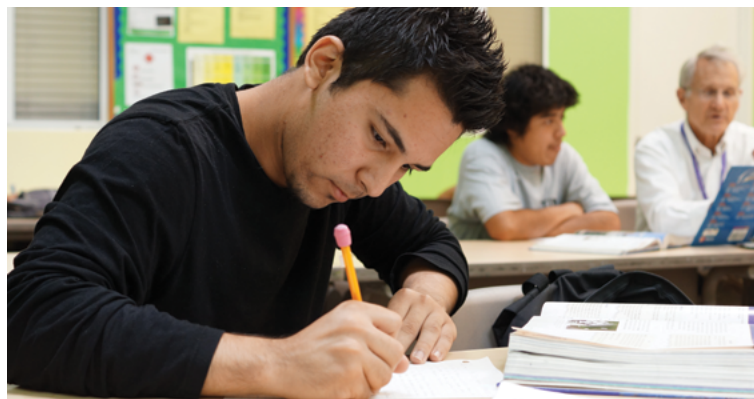
Collaboration is the word in the Educational Services Department! Members develop critical thinking and comprehension skills as they participate in collaborative learning activities and projects.

Creativity is nurtured through curriculum such as our "Be Kind, Rewind" Project, a creative collaboration between our Educational Services and Digital Media Departments in which members rewrite, film and edit well-known movies into condensed short films, which are screened for community audiences. In "The World Inside/Outside Me" series, members learn about anatomy, nutrition, fitness and environmental health through study projects and physical activities; while

our "Forces of Nature" class has members create water mazes utilizing straws, cups and tape to demonstrate the physics of water pathways and sources, such as a well, a water cleaning plant and an aquifer.

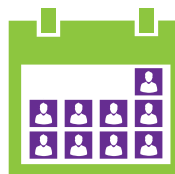
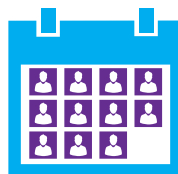
During the school year, the Educational Services Department serves an average of 230 members each day, five days a week – plenty of opportunities to provide support in obtaining a 21st Century Education based on the 4 C's: Critical Thinking, Collaboration, Communication and Creativity!

## 14 YEARS AND HUNDREDS OF STUDENTS BACK IN HIGH SCHOOL!



We are proud to host the Alternative Education Work Center of Jefferson Community Adult School on our campus. Jose Alvarez coordinates the program and he has brought tremendous enthusiasm and genuine commitment to the endeavor, which supports students that have dropped out or been caught up in circumstances that took them out of high school. We welcome a new teacher, Mr. Lance Antolin, who brings many years of AEWK experi-

ence. Beginning this year, students pursuing their high school equivalency certificate will have three test options to reach their goal: the TASC and HiSET tests; and also the new GED, not offered through regular LAUSD schools. Whichever test a student takes, upon passing they will receive a California High School Equivalency Certificate. We expect to graduate close to 40 students in June 2015!



**APCH has served more than 18,000 young people since we opened our doors in 1993. On average, more than 300 members cross our threshold each day.**



**BIG Thank you to America's Tire for contributing to A Place Called Home's Safe Passage Program - we now have an awesome school bus to transport our members after school!!**





## FOOD, JOY AND EMPOWERMENT AT APCH!



Nutrition, Health and Well-being are critical issues in our neighborhood, and our from-scratch meal service and garden to table concept brings APCH members and families healthy choices and training to grow and prepare fresh, healthy, delicious food.

With our strong focus on freshness, organics and nutritional content, we found a great new partner in Food Forward ([foodforward.org](http://foodforward.org)), a nonprofit that freely supplies local organic produce to our kitchen on a weekly basis.

Our ongoing Urban Garden Oasis

site and educational curriculum have grown to include a Community Garden in partnership with the LAPD Newton Division.

AND, we are excited to share that our food empowerment mission, which starts with gardening and harvesting, is now producing local sustainable "Pantry Products" made by our Food / Plant Justice Club teens. Soon, we hope to offer APCH products at farmers market locations in South Central!

## A TASTE OF SUMMER



Summer means abundance in the APCH garden. After a year-long wait, the passion fruits are so plump and juicy they can no longer hold their weight, and members arrive in search of these fallen treasures. What better reward for patience than fresh, vine-ripened fruit?

Another exotic, Shiso, an Asian herb, has joined our usual tomatoes, peppers, kale, squash, etc. This tall green beauty is also showing up in the APCH

kitchen, where our teens are making an exotic new pesto using shiso, miso, and pistachios— an Asian flare in a tradition dish. Ask for a taste when you visit!

This year we expanded our garden to the greater community by creating raised beds of veggies and fruit trees at the APCH / LAPD Newton Station Community Garden, where cops and kids are planting seeds of hope for the neighborhood!

## FOR LOVE OF THE GAME AND SOMETHING MORE...



Like in any other community, the families of South Central want a safe environment for their children to grow up in. Unfortunately, there is a shortage of parks and spaces for outdoor recreation in our neighborhood. When it comes to sports, there are a few competitive leagues, but due to enrollment fees, many families have to choose which of their children get to play, or they simply aren't able to participate.

Four years ago, A Place Called Home created the South Central

Sports League, offering FREE organized co-ed participation in basketball, flag football, and soccer. The SCSL comprises more than a dozen local organizations that have banded together to emphasize fun, sportsmanship, and community. Now in its 5th year, the SCSL is growing to include volleyball & girls basketball. We love the games and the competition, but more than anything we live for the special moments the program creates for our members' families and the whole community.

## COUNSELING PERSPECTIVES...

The APCH Davidow Counseling Center and all of the direct service staff had a busy and fun-filled summer in 2014, expanding our reach into the hearts of our members and broadening our helping capacity with our newest camp collaboration in Malibu, the **CIRCLE CAMPS FOR GRIEVING CHILDREN**. The loss of a parent or family member often leaves a devastating impact on children and many experience trauma, profound sadness and isolation. We were so gratified that APCH members could be in a beautiful, safe environment where they could explore their grief, connect with other kids and build their confidence through activities like swimming, climbing, canoeing, and campfire storytelling— all at no cost.

At APCH our Counseling team participates and observes in program activities to learn more about our members' needs and the larger culture that is impacting and shaping the lives of South Central youth. The youngest new members always find their way to the counseling center, led by returning members who explain, "Here is where you can come and talk about anything." Through our open door policy and relaxed approach over the summer, we see behaviors change for the better when members have more peer-to-peer engagement. Group activities allow members teach each other about the unique culture and social norms at APCH. And a good time is had by all!



**We serve more than 5,000 freshly prepared, healthy meals each month and distribute 250 bags of groceries to families.**





## CULTIVATING A CREATIVE COMMUNITY



You never hear anyone lament learning how to play music, but a lot of people are sorry they quit! **Music** is a lifelong source of joy.

This year we celebrated the graduation of Berklee College of Music scholarship recipients Laura Padilla and Brielle Blount. We also celebrate Daniel Villa, once a music major, now a USC graduate with a degree in American Studies and Social Entrepreneurship.

At APCH we know that not every music student will become a professional musician, but the intrinsic values and disciplines gained through in-

volvement in music will impact their whole lives. Music students gain skills such as problem solving, creative and critical thinking, and the ability to learn from and collaborate with peers. We are very proud of our APCH members for persevering and we look forward to continuing to cultivate a creative community.

Do you know someone who played an instrument growing up and now has an old clarinet, trumpet or guitar lying around? If so, invite them down to APCH to jam with our students or even donate that old instrument!

## DIGITAL STORYTELLING - DEVELOPING SKILLS FOR THE 21<sup>ST</sup> CENTURY

In 2014 we launched **BE KIND, REWIND**: a collaboration between the **Digital Media & Educational Services** Departments. With camaraderie as a cornerstone, middle and high school students worked together to adapt & recreate popular feature films as shorts, going through pre-production, production & post. The films were screened at our first Moondance Short Film Festival, with 270 community members in attendance to witness our students' amazing work on the big screen. The filmmakers stood in front of the audience with huge smiles as they were applauded for their hard work. And the skills they

learned will serve them well as they plan for their futures in a job market that prizes imagination and technological skills!

Congratulations to our 2014 BE KIND REWIND cohort: GHOSTBUSTERS: [Abigail M., Kaylee M., Anna B., Michelle L., Daniel M., Londyn C., Julian M.] THE SIXTH SENSE: [Grace B., Ingrid A., Maria E., Daisy G., Dylan W.] THE FAULT IN OUR STARS: [Daisy L., Gerson M., Diana B., Michelle E., Elizabeth A., Axel A., Erik C.] And grand prize winner, THE PERKS OF BEING A WALLFLOWER: [Ramon S., Aura B., Bryant M., Yesenia R., Jose A., James M., Oswald R.]

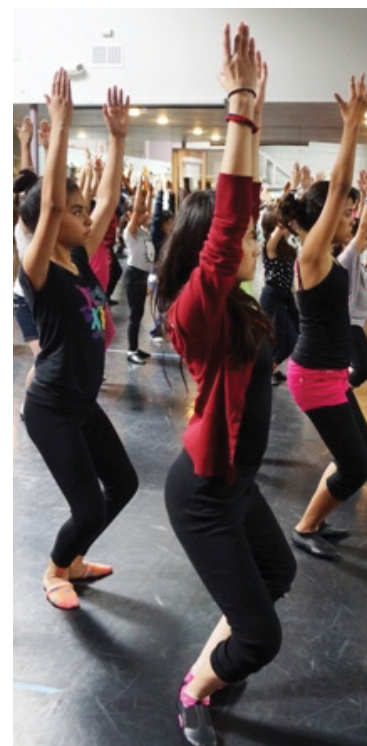
## DISCOVERED THROUGH DANCE

The arts can transform a child. In the APCH **Dance Studio**, a child can discover who they are and a teacher can find new ways to inspire and connect. Dance uncovers and invites the hidden to be revealed.

Our regular programming includes ballet, jazz, hip-hop, hula and a performing dance company class, and in the summer we may add Filipino Tinikling, Tap, Dance Team, and Dance Crew, challenging our members to step out of their comfort zones and deepening teamwork and community.

Rhythm & Tap Class includes great sounds and stomping out loads of energy. After a few sessions, fear and trepidation turn into excitement and willingness. The opportunity for a child to stand in her/his own skin with everyone watching is both frightening and empowering.

The arts are vital at APCH and any opportunity to try something new is applauded. At a time when more kids are becoming introverts, real human interaction is critical. We encourage



our members to connect, to be seen, and to be inspired; and dance is a doorway to all those things.



**Each year APCH provides more than 125 fun and educational field trips to concerts, museums, hikes, sailing, horseback riding, camping and the beach! We also take kids to visit colleges all over California!**







## ART IS WHERE OUR HEART IS



Each year APCH art students get more creative! We've used old cardboard boxes, recycled paper, and plastic containers to make sculptures, and many of our paintings have been showcased in a gallery where partner, **Create Fixate**, regularly includes APCH kid art alongside the works of professionals. Big confidence booster!

Last summer our **Experimental Art Class** learned that artwork can be multi-dimensional and interactive. Members created a fantastical indoor garden in our Family Room, using balloons, paper mache, newspaper, and polyester fiberfill to fabricate large

photorealistic clouds to hang from the ceiling, each featuring a different atmospheric condition (snow, rain, and lightning) and there was even a rainbow. Then, using stucco, tissue paper and glue, the artists made 8-ft. tall stems with giant flowers and insects made of plastic water bottles and egg cartons. A giant Venus Flytrap with long sharp teeth devoured bottle-shaped flies in its maw, and nature ran wild! Bitten by the bug, our members are chomping at the bit to create more installations and transform more spaces at APCH. We can't wait for our own Gallery to open across the street!



## APCH 2014 ALBUM - DREAMS FROM HOME



This year the **Audio Recording & Music Production Class** welcomed good friends Nick Bailey & Ryan Ogren to collaborate with member Tamia Staples on "Barrier" & "Best Part of Me". Both songs have an amazing Hip-Hop & Pop feel. Big thanks to Team Red's

Jacqueline Becker, Ameerah, Jordan Sapp, John Flanagan and Johnny Severin, who worked with members Heidi Zenteno, Robyn Harris, & Tamia Staples on "Me Without You." Also in the Studio, Breaking Tempo worked on "Breakdown" with member Omar

Guerra behind the Board and our newest voices, members Robyn Harris & Mansa Hunt bringing a fresh R & B vibe—check it out! Available December (great gift!) at iTunes and on disc at APCH.

## BLOSSOM

Inside me  
Potential energy  
Manifesting the bravery  
To conjure up the vocabulary  
To say-  
To say..  
That I love..  
That I love you  
I have spent the last month  
Thinking if I should or shouldn't  
But I take a look at you  
every day  
And I know for a fact  
I couldn't..  
That I couldn't miss this chance  
To say that I think  
you're awesome  
That I want to have this dance  
And hope that we will blossom  
So I sit here with this  
Potential energy  
Manifesting the bravery  
To conjure up the vocabulary  
To say  
To say that..  
I hope we blossom

— Anonymous  
APCH Member

## HOME

Home is like a cave,  
Warmth at night  
During the cold  
Home is like mama bear  
Protecting its cubs  
From the dangers outside  
Home gives us comfort  
When most needed  
Home is a place to  
gather around  
And make memories  
Be together and tell each other  
Stories that will stay within  
the walls  
Stories that will never be  
told outside  
Home is where the  
laughter echoes  
It echoes through the halls  
and rooms  
It wraps around you  
Motioning you to join in  
To join in and laugh  
Home is paradise

— Larissa, Age 15  
APCH Member





# BRIDGE TO THE FUTURE 2014 14 FACTS

**1** - Our GirlPower program provided mentoring and character development for 17 teens, culminating with the GirlPower Awards Luncheon in May 2014 – the new session is under way!

**2** - 13 young men participated in Journey, a rites of passage support program helping them transition into manhood.

**3** - We launched a new Teen Fitness curriculum.

**4** - L.I.F.E Mentoring paired 26 teens with caring adults in the community.

**5** - Our SAT support program served more than 40 students as they prepared for college.

**6** - We provided more than 1500 hours of 1:1 tutoring in math, science, and language arts.

**7** - We launched a STEAM program (Science, Technology, Engineering, Art, and Math) to support teens in advancing their knowledge and skills in these essential areas.

**8** - We provided more than 35 internships, helping teens develop job skills to last a lifetime.

**9** - Our new Teens Taking Action group volunteered at local community organizations to make a difference in the world.

**10** - Our 10-month college preparation course helped dozens of teens with college applications, tours, scholarships, FAFSA applications and the transition into college in the fall.

**11** - Our APCH Shaheen Scholarship Program sent 72 students to college for the 2014-15 academic year, raising our total past the 275 mark!

**12** - Teens mentored our younger members, conveying APCH core values and giving them a head start on the path ahead.

**13** - 10 teen members completed our Drivers Education course, rolling them closer to obtaining a license.

**14** - We started a Cultural Awareness program, promoting diversity and acceptance of other cultures through exposure to guest speakers, cuisine, music, videos and field trips.

## APCH SHAHEEN SCHOLARSHIP PROGRAM ENTERS 13TH YEAR!



We are proud to announce that we had 8 college graduates this year, accepted a new cohort of 16 Scholars and have 58 returning Scholars. We've had the pleasure of seeing our Scholars mature into adults ready to take on anything. Three standouts:

Maria Xochicale graduated from Cal State University, Los Angeles with a Chicana/o Studies Major, and as presi-

dent of MEChA (Movimiento Estudiantil Chicano de Aztlán) and a member of our Student Leadership Council.

Edgar Morales exhibits extreme discipline and work ethic as he enters his final year at CSULA and pursues his degree in Civil Engineering. He is already testing for his license and advancing to begin his career.

Darian Epherson completed her freshman year at the University of California, Berkeley with straight A's! She is interested in law, and has been interning for the Associated University of California Senator.

Congratulations to ALL our Scholars – you are doing it!!

## JOURNEY TO MANHOOD



Our "Journey" rites of passage program provides weekly support groups for our teen boys, including guest speakers, educational workshops and videos, panel discussions, deep conversations, community involvement, field trips and more. In addition to a

focus on the APCH REACH touchstones (Respect, Empathy, Accountability, Courage and Hope), we mentor our boys' transition into manhood through establishing seven key principles to live by: Be Impeccable With Your Words, Don't

Take Anything Personally, Don't Make Assumptions, Always Do Your Best, Self Determination, Pay It Forward, Wisdom is Learning.

A highlight this year was our Pay It Forward initiative, for which the boys washed all the APCH staff cars and accepted donations. With teamwork and fun, they were able to raise \$116, which they plan to contribute to a local nonprofit, Inside Out Writers.

At a culminating dinner, the "Journey Boys," as they called themselves, spoke about what they have learned and the bonds they have formed during their journey together. And, with their fathers in attendance, they affirmed the kind of men they want to be. It was a powerful beginning to the next chapter in their lives.

**In 2014 our APCH Shaheen Scholarship Program supported 74 students in attending colleges around the country, bringing our total to 283!**







## APCH ALUM VOICES: ELIJAH DOURESSEAU



I started attending APCH at the tender age of twelve. I was in the 7th grade, my favorite band was the Black Eyed Peas, and I got my lovely box turtle, Jamaica, who is still alive and kicking.

As far as APCH, impacting my life? Ha! How could a Mecca of youth enrichment and comfort, an academy for reinforcing leadership skills, an effective vehicle for getting to college possibly impact someone's life? I'm not all that sure...

There are too many fond memories swarming around my head so I'll just grab one: no matter how rambunctious the kids were, once someone yelled, "Pizza's here!," it could calm any riot.

I'm an administrative assistant at a film studio by day, and by night, a capped crusader (rocking an Afro)

working on children's books and comic books.

Five years from now, I hope to be working in church ministry on art-and-spirituality, and getting my material published. I wouldn't mind coming home to a nice little family of my own, either.

Find that thing you love and go for it. Read up on it. Talk to people who do that thing and participate in that thing. Most important, don't be afraid to embrace that thing when people are watching.

I am blessed to have a lot mentors. My 3rd grade teacher came back in my life and it is so cool to see him still putting love and passion into his teaching. I hope to be half the family man and artist he is.

We're a giant community, those who have been touched by APCH, and I want to share that wealth and recycle those efforts into help for other souls. I help the little tots at my church.

The thing about paying it forward, though: those little ones have affected my life in ways I didn't even see coming...

## LIFE MENTORING - A DEEP AND REWARDING COMMITMENT

Lead. Influence. Foster. Empower.

The **LIFE Mentoring** program at A Place Called Home is in its second year! Since spring 2014 our Adult:Teen matches have enjoyed outings to concerts, sporting events, museums, shows, community events, and more. Mentoring a teen twice per month for a year is a gratifying and life-changing experience for everyone involved. We've noticed that APCH Members in the LIFE Mentoring program have demonstrated positive developments in behavioral and social skills, self-confidence, academics and emotional well-being.

Thanks to all our supporters and volunteers for contributing to the success of LIFE Mentoring at APCH! We are looking to match APCH members,

ages 13-17, with positive role models like YOU! If you are 21+ years old, live in the Los Angeles Metro area, and are interested in learning more, email us at [LIFEmentoring@apch.org](mailto:LIFEmentoring@apch.org).



*DeMille and Thomas, bonded forever!*



**In its 1st year, our LIFE Mentoring Program matched 26 APCH teens with caring adults. In Year 2 we plan to double that number!**

## APCH ADDS STATE-OF-THE-ART S.T.E.M. CURRICULUM

In collaboration with Two Bit Circus, and funded by Time Warner Cable through its Connect a Million Minds initiative, APCH kicked-off **S.T.E.M.**

(science, technology, engineering and math) classes in 2014. Wearable Electronics includes cutting edge curriculum and our class culmination

project will be showcased at the **STEAM Carnival**, a Two Bit Circus production that combines hands-on social games with project-based

learning to inspire kids to pursue STEAM: science, technology, engineering, art and math.

## STRENGTH IN BEING A GIRL



**GirlPower** is a circle of sisters growing together and learning to love and trust each other. Through field trips, guest speakers, and community service, GirlPower provides extraordinary opportunities for teens to explore and mature. In 2014 GirlPower explored the circumstances of girls in countries around the world, and delved into the concepts of appreciation and the differences between needs and wants.

The GP Girls organized a dinner at a local homeless shelter housing more than 100 men, women, and children. One group helped children in the shelter make Mother's Day cards and

necklaces, while another decorated the community room for a celebration. The Girls developed relationships with the families in the shelter, and the day ended with mixed emotions and tears. Riding back to APCH, the Girls expressed appreciation for their own families and for the opportunities at APCH... opportunities that the families in the shelter don't have.

GirlPower provides space and opportunity for girls to grow, develop strengths, and find their voices as they transform into women with purpose and direction.





## ANNUAL STAKEHOLDERS CIRCLE



Each year APCH Executive Director Jonathan Zeichner hosts a ½-day gathering for APCH parents, youth, staff, volunteers, and directors from our Board and Leadership Council to LISTEN to everyone's voices, gather NEW IDEAS, and encourage INVOLVEMENT in APCH's future.

In May 2014 the group's focus turned to increasing parent participa-

tion at APCH and taking advantage of the expanded teen center we are building to reach out to youth in the community with the most urgent needs. All suggestions were conveyed to our Board of Directors at its annual retreat in June. Thank you—APCH is a community, and as we always say to the kids, it belongs to YOU.

## ALL-COMMUNITY EVENTS ALL YEAR ROUND



If you're driving on Central Ave. and notice a line of people around the block onto 29<sup>th</sup>, it's probably another APCH community event. Whether a holiday or back to school time, the community knows there is love and support at APCH. And, our donors know that when they invest in APCH, it makes a real difference for youth and families.

This past year we distributed tons of food, toys, clothing and books, and more than 1,000 backpacks filled with

school supplies. And, to add value, we love collaborating with other organizations, so we... planted a community garden at the Newton Police Station; joined Councilman Curren Price and Film Independent to co-host Movie Nights at parks throughout South Central; and partnered with the CD9 Nonprofit Coalition to offer nonprofit work experience for dozens of youth. You can be part of the APCH community and make a difference, too! [apch.org](http://apch.org)

## PARENTS VOLUNTEERING AND LEADING THE WAY AT APCH

Our APCH **Parent Partnership Circle (PPC)** has grown into a vital part of APCH programs and events! With their distinct 'APCH Proud Parent' T-shirts, they can be seen assisting in activities ranging from our Back to School Fest to welcoming members on the first day of our session and handing out schedules. They advocated for a Computer Class and a Nutrition/Cooking Class for parents, and both have been well attended. The computer class culminated with a ceremony made even more amazing by a wonderful potluck dinner, and the nutrition class produced a Parent



Cooking Demo at our Annual Health and Garden Expo!

Parent involvement is paramount to a thriving APCH, and we are excited to share that the PPC will soon be providing APCH tours for new parents, continuing APCH Parents' journey as leaders and stakeholders, while embracing new members of our growing family. Gracias Padres!!

## VOLUNTEERS AT APCH

When volunteers walk through our doors, most have no idea how many hearts they will touch, how many smiles they will create or how many futures they will affect. But, when their service starts, they quickly realize that A Place Called Home is a place of change. More than 1,500 volunteers have contributed over 20,000 hours to our community, and each hour changed the world for the better.

At A Place Called Home, volunteers create the change they want to see in



the world, and you can, too. To get involved, please contact our Manager of Volunteer Engagement at: [volunteer@apch.org](mailto:volunteer@apch.org) or (323) 238-2412.

Remember, no one can do everything, but everyone can do something!

## I WANNA BE ROYAL, ROYAL!

T'was another year of prom and graduation royalty, as 750 girls and 200 boys participated in our 12<sup>th</sup> annual **Cinderella & Prince Charming Project**. Inspirational speakers presented self-improvement and empowerment workshops and the teens got to "shop" our boutique, choosing from 3,000 formal dresses and 600 suits, plus jewelry, shoes, and accessories. Kimora Lee Simmons shared her story (and some amazing shoes!) and our own GirlPower girls rolled up their



sleeves and hosted the event. Congratulations to the Class of 2014—we hope your culminations were memorable, and that you will always PAY IT FORWARD!



**THANK YOU APCH!**  
Because of you  
I got to have the  
prom of my dreams!  
— Ann, HS Senior



## 2014 STARS AND STRIKES



Stars filled the house for our Stars & Strikes Celebrity Bowling and Poker Fundraiser. Nick Cannon, Jason Derulo, Howie Mandel, Jessie Malay, Mike Posner, Bonnie McKee and R5 were among more than 400 celebrities and guests that took to the lanes and poker tables for a night of fun. The dedication and long hours put in by APCH's Leadership Council\* paid off, as the event raised more than \$100,000 for APCH's free programs!

Check our website for info for the next STARS AND STRIKES in April 2015!

## 2014 GIRLPOWER AWARDS LUNCHEON



Celebrating Women Who Inspire Us, we honored District Attorney Jackie Lacey, actress/singer Amber Riley, businesswoman Marisela Nuño, and philanthropist April Freitag. The APCH GirlPower 'tweens' and teens were featured honorees, too, and the event was hosted by actress Shondrella Avery. The APCH band, 29 Live, and our Dance Company rounded out the dynamic program, raising funds for our GirlPower Project and other innovative programs that inspire inner-city youth to develop life skills, strength and focus for their minds and spirits as they transition into becoming productive adults.

### SAVE THE DATE:

The next GirlPower Awards Luncheon will be on May 21, 2015 at the Beverly Hilton Hotel.



A Place Called Home proudly honored KIIS-FM Assistant Program Director and Music Director Beata Czechowski for her dedication and support of our work.



Thanks to you,  
all services at APCH  
are free to our  
members and their  
families!



\*The APCH Leadership Council is a group of young professionals dedicated to volunteering, raising funds, and many other great activities for A Place Called Home. They are especially supportive of the organization's programs for teens and our annual A Place Called Home for the Holidays festival. Want to get involved? Email [info@apch.org](mailto:info@apch.org) and write **LEADERSHIP COUNCIL** in the subject line.

## 2013 GALA FOR THE CHILDREN CELEBRATING 20 YEARS!



Thanks to APCH Board of Directors and our remarkable honorees Dr. Phillip Goglia; Sister Patricia Connor, RSHM; and Jack Suzar, the Gala raised more than \$1 million to support our FREE programs for thousands of young people, families and community members! Throughout the evening, APCH members shared stories about how APCH empowers them to overcome adversity and build up their lives.



## 2014 GALA FOR THE CHILDREN HONORING BYRON ALLEN, AUSTIN BEUTNER AND TERRY PRESS

### SAVE THE DATE:

December 10, 2014 at the Beverly Wilshire



Our deepest appreciation goes out to the dedicated individuals on the Board of Directors of A Place Called Home, who TOGETHER give and raise more than a million dollars each year.

Barbara Arnold Doug Atchison Robyn M. Browning Barry Brucker	Sue Brucker Dawn Campbell Sister Patricia Connor, RSHM	Allison Crandall Barbara Glazer Jill Goldman	Cyrus Hadidi Louise Hamagami Jonathan Hodge	Robert Israel Alan Melina Melissa Palazzo	Julie Pilot Alexander Pratt Howard Sherwood	Stephanie Sherwood Marshall Wax Hamed Tavajohi	Sandy Walia Marshall Wax Mayellen Zarakas
<b>Archangels</b> <b>\$1 Million +</b> <b>Faith Strong</b> <b>Angels</b> <b>\$500,000 to \$999,999</b> <b>Marion Brucker Legacy Fund</b> <b>Big Thinkers</b> <b>\$250,000 to \$499,999</b> <b>The David and Linda Shaheen Foundation</b> <b>Community Builders</b> <b>Platinum</b> <b>\$100,000 to \$249,999</b> <b>Anonymous Donors</b> <b>California Community Foundation</b> <b>County of Los Angeles</b> <b>Michelle and Cyrus Hadidi</b> <b>Joseph Sherwood</b> <b>Howard and Stephanie Sherwood</b> <b>Summer M. Redstone Charitable Foundation/ Sydney Holland</b> <b>The 2010 Faith Charitable Trust</b> <b>The Ralph M. Parsons Foundation</b> <b>The Rose Hills Foundation</b> <b>Transformation Trust</b> <b>W.M. Keck Foundation</b> <b>Weingart Foundation</b> <b>Community Builders</b> <b>Gold</b> <b>\$50,000 to \$99,999</b> <b>College Access Foundation of California</b> <b>Herbalife Family Foundation</b> <b>May and Stanley Smith Charitable Trust</b> <b>Religious of the Sacred Heart of Mary Provincial Church</b> <b>Western American Province</b> <b>The Audrey Irmas Foundation for Social Justice</b> <b>The ELMA Philanthropies Services (U.S.) Inc.</b> <b>The Mark Hughes Foundation</b> <b>The Sharon D. Lund Foundation</b> <b>Warner Bros. Entertainment, Inc.</b> <b>Community Builders</b> <b>Silver</b> <b>\$25,000 to \$49,999</b> <b>BCM Foundation</b> <b>Discover A Star</b> <b>Sydney Holland</b> <b>J.B. &amp; Emily Van Nuys Charities</b> <b>Joe Dutch, LLC</b> <b>Kenneth T. and Eileen L. Norris Foundation</b> <b>Nancy and Bruce Newberg</b> <b>QueensCare</b> <b>RKC Foundation</b> <b>D.C. Rosenbloom</b> <b>Jack Suzar</b> <b>The Davidov Charitable Fund</b> <b>The Jay and Rose Phillips Family Foundation of California</b> <b>The Ray Charles Foundation</b> <b>Time Warner Cable</b> <b>Toyota Financial Services</b> <b>Kathy and Marshall Wax</b> <b>Capacity Builders</b> <b>\$10,000 to \$24,999</b> <b>America's Tire</b> <b>Florence and Serge Azria</b> <b>Jackie and Howard Bankich</b> <b>Bank of America Charitable Foundation</b> <b>Bank of the West</b> <b>Sue and Barry Brucker</b> <b>Capital One Services, LLC</b> <b>Carrie Estelle Doheny Foundation</b> <b>Lisa and Steve Cassidy</b> <b>Chipotle Mexican Grill</b> <b>Chisick Family Foundation</b> <b>Credit Suisse Americas Foundation</b> <b>David Bonnett Foundation</b> <b>Pam Dawber</b> <b>Executive Offices of the Board of Supervisors</b> <b>Richard Frank</b> <b>Peter Gilhuly</b> <b>Barbara Glazer</b>	Global Excess Solution Corp. Susan Tick and Scott Goldstein Marc Shmuger and Louise Hamagami Herbalife ICM Partners Gail and Robert Israel Joseph Drown Foundation Kaiser Foundation Hospitals Beth and Kenneth Karmin Nadir "RedOne" Khayat Elaine Kramer Lon V. Smith Foundation Louis L. Borick Foundation Morgan Stanley Foundation Ortho Mattress, Inc. Amber Riley Roth Family Foundation Sherwood Foundation Skechers USA State Street Foundation Taco Bell Foundation for Teens Target Corporation Dawn Taubin The Ant Farm The Capital Group Companies Charitable Foundation The Carol and James Collins Foundation The Donald T. Sterling Charitable Foundation The Ella Fitzgerald Charitable Foundation The Gloria L. Johnston Trust The Harold & Mimi Steinberg Charitable Trust The Ryan and Genevieve Tedder Foundation Todd R. Wagner Foundation U. S. Bank U.S. Department of Justice U.S. Soccer Foundation Wells Fargo Wells Fargo Foundation Jan and Stephen Winston Andre Young <b>Dedicated Supporters</b> <b>\$5,000 to \$9,999</b> Aegon Transamerica Foundation Alpert & Alpert Foundation Barbara Arnold Association of Entertainment Marketing Agencies Frank Baxter James and Elizabeth Burgess Carl E. Wynn Foundation Coldwell Banker - Beverly Hills Ned Colletti Concept Arts Studios Inc. Diana Davidow Faith Derbyshire Moise and Carol Emques Finish Line Youth Foundation Foley & Lardner LLP Fox Group Selwyn Gerber Louis Gram Hollywood Charity Horse Show Alan Horn Interscope/Geffen/A&M Island Def Jam Kaiser Permanente KMD Productions Latium Entertainment, Inc. Learning by Giving Foundation, Inc. Ed Lieberman Walter Lohr Los Angeles Dodgers Delphine Mann Marymount High School Linda May Kathleen and Frank McCarthy Kostan New Heights Entertainment, LLC Opus Community Foundation Emile Gladstone Elizabeth Petrazzolo Julie Pilot Mr. and Mrs. Dave Plecha RedOne Productions, LLC Arjun Rich Rotary Club of Los Angeles Ruth/Allen Ziegler Foundation	Sheila Gold Foundation Signature Estate & Investment Advisors Lynne Silbert Simone Vickar Foundation Lisa Sloan Teens In Action (TIA) The Annenberg Foundation The Apatow-Mann Family Foundation The Cooper Family Foundation, Inc. The Rite Aid Foundation Randall Wallace Warner Music Group Services Westport Construction Workshop Creative, LLC <b>True Believers</b> <b>\$2,500 to \$4,999</b> Dalia and Doug Atchison Avery Dennison Corporation Bank of America Bel Air Investment Advisors, LLC Best Buy Children's Foundation Dahlia and Art Bilger Scooter Braun Robyn Browning Joan and Allan Burns Carol Cheng-Mayer Matthew Cooper Creality Realty Group Citidel, LLC Allan Cutrow D'Addario Music Foundation Frida Diaz Mr. and Mrs. Jay Flaherty Richard Foos David Freitag Jim Gallagher Gregory Gelfan Mr. and Mrs. John Given Jonathan Glaser Daniel Gold Betty Graham Mr. and Mrs. Tom Grojean JD Group J.B. Berland Foundation Jack and Jill, Los Angeles Chapter John & Hilda Arnold Foundation Inc. Leslie Joseph Fred Kayne Keli Lee Martin Lin Tony Litman Lululemon USA Inc mOcean Lon Morton Robert Murray Rick Powell AlexanderPratt Jeff and Denise Robertson Barry Rudin Seismic Productions, LLC Lawrence Sherwood Sidney Stern Memorial Trust Charles and Carol Smith Andrea and Glenn Sonnenberg Charlene Sperber Strauss Foundation Trust STRZ The Label, LLC Beth Styne Summit Business Management Hamed Tavajohi The Audrey & Sydney Irmas Charitable Foundation UBS Financial Services Inc. United Healthcare University of California, Los Angeles Whole Foods Market Womens Professional Network Mayrrell Zarakas Monica Chindlund and Jonathan Zeichner <b>Investors</b> <b>\$1,000 to \$2,499</b> 10 Eleven Wendy Abrams Alan Abramson Mark and Gina Albert Stephanie Allen Alliance for a Healthier Generation Matthew Anhut Paul Apel	Ares Operations, LLC George Arredondo AT&T Employee Giving Campaign AT&T United Way Employee Giving Campaign AutoZone Regional Office / Los Angeles Lauren Bahar Bank Of The West Employee Giving Program Anne Barnett Rick Battista Jane Belzberg Susan Berk Westport Construction BTL Communications Robert Blumenfeld Tom and Rowena Bouquet Douglas Brandt Eric Bright Jonathan Carson Alan Casden J.T. Casey Joel Cassel CBIZ MHM LLC Debbie Cerrito Chan Soon-Shiong Family Foundation Chris Chapin Richard Charkham City National Bank Mark and Laurie Cohen Comerica Bank Community Coalition for Substance Abuse Prevention and Treatment Anita and Strout Connor Costco Richard and Alison Crowell David Margulies & Associates, Inc. Robert Davidow Vaughn and Shawn Dennis Teresa and Tom DeRogatis Ali Din Disney Worldwide Services, Inc. Juan Dominguez Denise Doyen Linda Dreyfuss Suzy Shuster and Richard Eisen Kelley Erod Susan and Bob Feldman Drew Fenton P. Donnovan Field Fran and Ray Stark Foundation Francis D. & Irene D. Griffin Foundation, Inc. Steve Frankel Greg Fu Kelly Gilmore Josh and Stephanie Goldstine Mary Ellen Gozdecki Green America Greystone Foundation Jay Griffith Jennifer Guillelte Gursey / Schneider LLP Reed Halladay Judy Hanauer Carol Hannah Erin Hanson Mr. and Mrs. Bob Harper Jonathan Hodge Clive and Carol Hoffman Hogan Lovells HOK Hollywood Amoeba, Inc. Philip and Jacqueline Horn Lee Hutter Freya and Mark Ivener Martin Jacobs Jacqueline B., Inc. Sharon Johnson Susan Kakesako Margaret Karren John Karubian Joan Katz Michelle Kaye Kelter Family Foundation Amy Keller Tyler Kelley Peter and Pamela Kelly Kemosabe Records Kiki Bean Marcia Koff	Sandra Krause Phyllis Kruckenberg L.A. LIVE Properties, LLC Jackie Lacey Perry Leff Legacy Venture III, LLC Leichtman Levine Family Foundation Levey Cherry Family Foundation Scott Lewis Jazzlyn Liggins Hamish Linklater James Linnan Mr. and Mrs. Johnny Lopez Los Angeles Breakfast Club Foundation WendyBlock Emily Lynch Macy's/Bloomingdales Corporate Services Sasha Madron Elaine Malouf Howie and Terry Mandel Gary Marshank Karen McTier Mary Meeker Alan Melina Milken Family Foundation Robert Mirvis Mitchell, Silberberg & Knupp Foundation Todd Morgan Michael Morris Lawrence Murphy Nathan Family Foundation Diane Nelson Lara Nesburn Victoria Netanel Greg Neuwirth Phyllis Nugent One Kings Lane Inc. Ornest Family Foundation Barbara and Mark Overland Melissa Palazzo-Hart Andrew and Helen Palmer Maria Pekurovskaya Colleen and Christopher Pennell Rodd Perry Kevin Philip Louis Pitt Sandy and Barry Pressman Andrea Preston Patrick Purcell Regional Properties, Inc. Pamela Reims Joyce Rey Stanley Richman Mark Rios Marianne Robertson Rocker Bros. Meat & Provisions Inc. Roll Giving Rosen Family Foundation Rosenfeld Family Trust Laurie Rosenthal Arlene and Jerry Rosin Jonathan and Alison Roth Roy E. Grummer Foundation Carla and Fred Sands Stephanie Santangelo Darryl Schall Joseph Schirripa Jack Schlosser Carole Schwartz Lisa Scott-Benson Self-Realization Fellowship Church Sempra Employee Giving Network David and Linda Shaheen Beverly and Sam Sheldon Susan Shleifer Ronald Silverman Patrick Simcock Jay Simmons David and Suzanne Singh Sisters of St. Joseph of Orange Six of Us As One Foundation Mr. and Mrs. John Smith Stephen Smith E. Steven Solton Spilo Worldwide Brenda Spira Lawrence and Gloria Spungin Squid & Squash Foundation Ross Steeves Eva and Mark Stern	Stone Tapert Sub City Records Tamaqua Foundation Emese Lardy Green Chris Tayback Paul Telegdy Katia Teliez The Bell Family Foundation, Inc. The Durfee Foundation The Kleiner Cohen Foundation The Lions Group, LLC The Sheri & Les Biller Family Foundation The Simmes/Mann Family Foundation The UCLA Foundation The Winnick Family Foundation, Inc. Thing 123 Foundation Tomy Advertising, Inc. Treasured Accessory Cynthia and Richard Troop United Way California Capital Region Maria Vidal Imer Vigil Alexandra Vorbeck Barton Walde Adam Waldman Robert Wass Whistling Bird Music David Wilson Bruce Wiseman Women in Film Young Nak Celebration Church Hana Zaretsky Harriet Zaretsky Marilyn Ziering Richard Ziman <b>Sponsors</b> <b>\$500-\$999</b> 1st Enterprise Bank Alice and Olivia Victor Allen Amgen Foundation, Inc. Steve Bakunas Gina Balian Bank of America United Way Campaign Natalie Barandes Don and Carolyn Berger Inna Berger Judy Berghausen Alan Berro Beverly Hills/Greater Los Angeles Association of REALTORS Big Sunday Carol Biondi Greg Black David Block Michael and Andrea Bostick Barbara Boylan Matt Bretz Gay Browne Bryan Cave LLP California Lutheran University Dawn Campbell CauseCast Foundation CauseConnect LLC Tommy Chambers Liwha Chen Church of the Blessed Sacrament Joseph Collins Commit Media, LLC Martin Corcoran Corpus Christi School Linda Cvette Crush Management Therese Curtin Susan Dietz A. Redmond Doms Anne and Patrick Dowling Darren Edwards Jeffrey Eisen Craig Elson Heidi and Jonathan Epstein Lois Esformes Mary Farrell Gary Fine Robert Firing Diane Forester Laura Fox	Hank Frazee Jim Fredrick Robert Fresco Gerald Oppenheimer Family Foundation Ann and Jim Gianopulos Cristine Gillespie Michael Ginesiro Madeline Ginstein Jeff Glasen Goldman, Sachs & Co Matching Gift Program Jonathan Gordon Helen Greene Joshua Greer Deborah Groening Michelle and Ron Harrington Gay Harwin Sharon Hauptman Jose Herrera Holland & Knight Beverly Hyman Ann Imras Michelle Jackino James & Ada Horwich Family Foundation Pamela Jobe Lisette Johnson Jason Kaplan Sandra Karole Peters Stephanie and Melvin Kay Alan Kaye Robert Keislar Irene Kung Larissa Lamonte Lapolt Law P. C. Yvonne Lee Jeffery Levy Guy Levy Lewie's Group, LLC Jeffrey Loeb Loeb & Loeb LLP Robin Lundgren Dan MacDonald Kathy Mardrossian Josh Markman Brian McCarthy Frank McKernan Martial Melvoin Nicole Mennier Joseph and Susan Miller Cara Miller Susan Moley Andrea Navedo Janet Noah Jennifer Nordstrom Northgate Gonzalez LLC Diane Paul Murray Pepper John Perkins Shelly and Jim Pettis Mr. and Mrs. Stephen Petty Forest Podrat Post Real Estate Group, Inc. Gilbert Radillo Sandra Rapke Norma Rappaport William Ray Religious of the Sacred Heart of Mary Convent Carla Roberts Gina Roberts Eden Romick Michael Rutman David Sadkin Galen and Joe Sanford Santa Monica Pier Aquarium Elizabeth Sayre John Schullian Richard Schulman Howard and Linda Schwimmer Pam Shriver Siren Studios Michael Smooke Southern California Texas A&M Club George and Jenean Stanfield Randi Steinberger Roger Stoker Alessandra Strahl Julie Summers The City Market of Los Angeles The Classy Bag Lady	The David and Lucile Packard Foundation The Stanley and Joyce Black Family Foundation The Steven M. Lewine Build a Better World Foundation The Vollmer Family Foundation Therapy Studios Robert Thompson Time Warner Employee Grant Programs Andrea Tournoradi Paul Turley United Way of Central New Mexico Margaret Venneri Village School Vicki Walters Mark Wapnick Bunny Wassner Deborah Wasson Howard Wetzelman Wells Fargo Community Support Campaign Judith Weston Donna Wetsor-Hennes Tom and Susan Whitesell Jonah Wilson Hana Wittenberg Eileen and Curtis Wong Justin Woodhull Graham Yost Susan Rieker and William Zarakas Amy Ziering Jim and Maddy Zimring Lissa Zwahlen <b>Forward Thinkers</b> <b>\$250 to \$499</b> Agape International Spiritual Center Jeff Alperin Charisse Anderson Ashley Stewart Ryan Audagnotti Ayco Charitable Foundation Andrea Bacon Allen Balik Jeff Barbakow Michael Bateman Bead Relief Jennifer Belushi Andrew Bick Amy Bookman Margarita Borschukova Katie Bowen Ira and Gail Brodsky Gregory Brody Peter Brown Mari Bukofsky Susan Burns James Burrows Marilyn Cahn Charles Cale Sophie and Darrell Carr Sabas Carrillo Mark Chotiner Christine Clark Coalition for Responsible Community Development Lulu Collins Marsha Converse Cool Planet Brands Covington Capital Management Scott Culbertson Deborah Dana Barbara Delury Irwin Deutch Virginia Dibona Joan Duffy Nancy Edwards Enterprise Communications, Inc. Craig Erlich Gayle Ezzalov Brad and Lani Favre Patricia Finkel Erik Fleming Kara Fox Zachary Freehling Tim Friedman Charles Furst Robert Gandara Gorag Gandhi Fernando Garbato

## MEET FAITH STRONG, A LOYAL DONOR OF 15 YEARS!

We were so happy to celebrate Faith's 92nd birthday at APCH! And then she gave us a big gift toward building our new Bridge to the Future Center!

**THANK YOU, FAITH, WE LOVE YOU!**

Faith says: "I don't know why rich people don't give away more money while they're still alive - what are they waiting for?"







## Have you included APCH in your Estate Plan?

Veronica Garcia Maryl Georgi Selwyn Gerber Thomas Giordano-Lascari Philip Goglia Paulette Goldschmid Emily Goldstein Sergio Gonzalez Barbara Kortikov Norin Grancell Greenhaus GFX, Inc Robin Greer Linda Griego Lisa Grode Laurie Groh Priscilla Halper Marco Hansell Sunshine Hanson Joan Harker Elvia Henderson Lori Jasinski Carolyn Johnson Tyler Johnson Howard Karabel Karmativity Design Rob Katherman Raven Kauffman Stephanie Kay Jens Kohler Benn and Linda Konner Judy Kravitz Drew Lerner Alicia Levitt Stacy Lifton Julie and Harley Liker Ken Linzer Lauren MacDougall Robert Mann Barbara Marcus Peggy Marks Phyllis McElhane Laura McKernan L. Miller Bob Miller North Carolina A&T State University Alumni Association, Inc. Merilee Oakes Bobby and Dalia Omrang Jacqueline Passanisi Paypal Giving Fund Arlene Pepp Jerry Phillips Tracey Pollack Steve Pollard Pamela Popovich Ron Rapoport Pam Rector Elizabeth Reid Religious of the Sacred Heart of Mary James Reynolds Michael and Linda Rosen Richard Rosenzweig David Sameth Liddane Sanders Derrick Sawyer Macie Sears Scherick Thomas Schiff Donna Schlessel Tamara Sekoff John Shane Richard Shapiro Colette Shelton Peggy Sinnott Mark and Marcia Smith Marc Smooke Babette Sobel Lisa Sockolov Andy Solomon Neil Spiers Jeff Stacy Jay Stakeon Carrie Stein Elizabeth Stewart Jane Strouse Allison and Zach Studin David Stuppeler Suddleson Living Trust Harry Suh Elaine Sunoo Joseph Sweeney Doran Tajfel Barbara Taub Lila Tavakoli The Vida Spears Family Trust Jason Thompson Miranda and Brett Tollman Aurelio Torre Trust Jaclynn Twomey Walk With Sally Alin Wall Walsh Charitable Fund Louise Ward Sabrina Wind Patti Winkler Edwin Yates Rosalie Zalis	Priam Apas Stephanie Aron Greg Ashlock Michael Atchison Pauline Averdano Robert Baker Gina Bargini Karoline Barker Joyce Barkin Barbara and Michael Barnoski Patte Barry Chad Bates Pam Becks Laurence Behrens Ty Bentli Simone Benyacar Michael Bergin Larry Berkin Wesley Bilson Amrita Bindra Jim Blechman Charles Block Elizabeth Bocanegra Robert Bogard Robert Borden Arla Bowers Robin Brennan James Brock Jill Bronstein Stacey Brooks Diahanna Brown Jacqueline Broxton Buffalo Exchange Barbara Bundy Wendy Burch Adele Burke Ron Burkhardt Marvin Burns David Buxton Wendy Camacho Rebecca Cathcart Fandra Chang Miki Chase Stephen and Caroline Chinlund Helena Cho Grace Chong Joan Clayton Richard Clement Patricia Connor David Cooper Allison Copes Brian Courville Linda Covette Dewanna Covey Bryan Crain Al Crawford Tina Crowe Dorothy Curtis Debra Curtis Elana Cuzzo Daniel Davis Joseph Day Gerard Del Colliano Richard Deutschman Allyson Devine Jerry DeZem David DiCristofaro Patrick Duffy Sylvia Dunbar Dunbar Village LP Andrew Dupre Joy Dupuis Steven Dworkin Brian Sirtutz Michael Earmhardt Joe Edward EF Collection, LLC Robin Eggersten Harriet Eilber Jeff Ellingson Neil Espiers D.J. Ennis Sam Epstein Martin Ettbey Karen Exler Kendall Fecther Sharon Feder Irwin Feinberg Suddleson Felsenthal Lisa Field Carol Finley Nikki Fioravante Doran Tajfel Camille Flanagan Dana Fletcher Dorsay and Matthew Flint Daniel Flores Darlene Fogel Sean Foley Julia Forkin Howard Forrest Roger Fox Sloan Freitag Rebecca Friendly Jeff Frymer Kim Furzer Elizabeth Gabay Leslie Gallin Sharlene Galper Judith Gasson Bobbie Geller-Fields Betty Genino Gloria Gilbert Lori Gilder Alan Gindi Mark Glasser Michele Andina Rock Anthony	Steven Glodney Marilyn and Allen Golden Jeff Goldman Douglas Gould Preston Gould Margaret Graham Lee Grant Sheri Green David Greenman Marilyn Greer-Katherman Allen Grossman Harriet Guggenheim Harold and Melinda Haesche James Hale David Hanpeter Dean Hansell Katherine Harnick Renee Harrangue Charyn Harris Robert Havens Sharon Hearn Shane Hensingier Lisa Hernand Kara Hernandez Rogina Hernandez Loren Hill Barry Hoaire David Hoberman Paul and Sue Hoffman Brian Holmes Elliot Horowitz Lindsey Horvath Margaret Howe Linda Hsu John Huddle Adam Hunt Alexandra Hunter Allyson and Brian Hyde Momoko Iko-McCloden Karl Jablonsky Brian Jacobs Patricia James Daron James Warner Jansen Adam Janet Bennett Johnson Adam Johnson Teresa Johnson Gary Johnson Francisca June JustGive.org Adriana Kahane Aman Kathuria Joy Kecken Jessica Keegan Margaret Keenan Leah Ketcham Shakti Khalsa Sarah Kimbrough Steven Kirchner Claudia Kliszewski Caitlin Knopp Boris Komarov Howard Korbberg Jackie Kosecoff Gary Krausz Carly Kriwanek Kroger Barry Krutchik Jacqueline Landry Amy Lange Lindsey Lanier Margot and James Latham Barbara Leidenfrost Mitchell Lester Jay Levey Michael Levine Scott Lewis Lynn and Ed Lieberman Kathryn Linehan Ruth Livier Karen Loucks Beatrice Lovett Mr. and Mrs. Patrick Lynch Michael Mahaffie Michele Maize Diane Manns Francis Mansfield Roberta Marshall Kathy Marshall Phillips Marshall Scott Martin Harold Masor Christopher May Shelley and Brian McCarthy Muriel McClendon Vaughn McDonald Jason McFadden Kellen McGee Jack McGregor Evan McNamara Jerald Medway Charles Meyer Amy and Brad Miller Julie Milligan Jeffrey Mirvis Kevin Morris Janet Murillo Thomas Murphy Tamara Muzac Mel Nachman Neighbor to Neighbor, Inc Sophie Norman Liz Nyman Charisse Older	Deborah Oppenheimer Richard Ortega Mardiros Orunackiel Melody Padgett Larry Palmer Palmer Addressing and Mailing Co Hiran Patel Rachel Pearce Annette Pearson Robert Peet Ruby Perez Stephen Perloff Perloff Webster Michael Phillips Pictures in a Row Leo Pircher Matthew Poage Jean-Philippe Poissant Sarah Politis Missy Polson Andrea Poormoadi Drew Porter Monique Proctor Stephen Rabin, M. D. Steven Rabineau Charlotte Rae Fred Raskin John Redmond Tiny Riley Rittenhouse Square LP Jeff Woolnough & Claudette Roach Beverly Robinson Bertha Romero Felicia Rosenfeld Edward Rosenfeld Robert Rosenhelk Robin Rothstein Benedetto Rotondi Judy Rubin Anne Russell Safety & Life Support CPR Training Eladio Sainz Diane Saltzberg Bonnie and Bill Sanders Michelle Sarrow Jack Saxe Jill Schubert Adam Shankman Jacqueline and Colin Shepherd James Sheridan Aleen and Stan Shmuger Motti Shulman Leslie Siebert Margaret Simpson Marcus Sitrin Elaine Skaist Andrew Skline Ellen Slavin Clyde Small Richard Smith Steven Smith Barry Smooke Boris Snyder Carol Snyder Ruth and John Souza Margaret Spalenka Daniel Spickard Melinda Spitz Lynne Sprecher Moira Squier Margaret St Pierre Morgan Stanley Pamela Staton Tracey Steinfeld Alan Steinfeld James Sterling Andrew Stern Matt Stevens Holly Stocking Reginald Sully II Edward Swigert Traci Szymanski Donald Tapert Lacey Taubin Osamu and Mitsuyo Teranishi The Gotham Group, Inc. Lissa Thoery Stephen Tierney Jennifer Tiet Gary Tokumori Jason Tomarken Elizabeth Townsend David Trachtenberg Tru Protection Aviva Truesdell Anthony Truill Marshall Tuck David Turner Heather Updegraff Paul Updegrove Monica Valner Valerie Van Galder Andy Vargas Aimee Vaughan John Vega III Angelique Velez Susan Vinci Stuart Wagner Carol Walters Navan Ward Robert Watzke Joel Wayne Joyce Wees Sanford Weiner Daniel Weisman	Scott Wendelin Suzanne Wertheim Eric West J. B. White Larry Williams Lee and Mark Wind Deanne Winokur Kristen Echols Stephanie Eddings Carmela Elias Linda Elms Employees Charity Organization of Northrop Grumman Margaret Engman Arlene Epstein Shahna Esber Marilyn Fabricante Karen Fairbank Mitchell Fee Janice Feinstein Maria Ferrante Mark Fienberg Cynthia Fierro Victor Figueroa Robert Finkel Jennifer Fitzgerald Christina Flaxel Natalie Fousekis Jennifer Franco Monica Frederick Alexander Fuqua Sarah Fuqua Mae Gagajena Megan Galletty Rachel Garcia Danilo Garcia Sandy Garcia Ronnie Garcia Lee Garlington Ina Gartenberg Ed Gaudi Aaron George Nikki Ghiseline Lori Ghiseline Mary Jo Gillis Ronda Ginsberg Michelle Glaser-Weiner Tracey Glenn Lisa Goglia Anna Gorman Roderic Gorney Cheryl Gramza Chris Grapsas Maria Green Michelle Gruber Carmen Guzman Wendy Guzman Michele Haney-Fogerson Brian Hanrahan Tresa Harrington Ken and Kristin Harrison Tracie Harvey Kaleb Havens Jennifer Hendershott Rachel Henley Melody Hernandez Cheryl Hesse Joshua Hodas Daniel Hoffman Kim Holmes Anthony Hopkins David Huber Richard Huppertz Victor Huzvar Keith Ikemoto John Ivey Dana Jackson Tashia Jacques Jenny Jaque Franklin Jefferson Marissa Jerome Justin Johnson Byron Johnson Edmond Johnson D Johnson Stephen Jones Cynthia Jones Miranda Jones-Rodriguez Vida Joshi Susan Kahan Cecily Kahn Edward Kandel Lorin Karic Terry B. Friedman and Elise R. Karl Lila Kates Christine Kattengell Alison Katz Tracy Katz Bennett Kayser Monica Kelly Todd Kessler Karen Kim Hera Kimporo Grace Kirchner Dennis Kissick Paul Koistinen Tina Koopersmith KPMG Community Giving Campaign Joan Kraus Roxanne Kroll Steph L Elissa Lachman Shirley Ladd Tayra Lagomarsino Simon Lamson Genie Lara Susan Launer	Jennifer Dion Sandra Disner Jacqueline Djedje Wendi Doyle Charles Drum Christina Dudka Kristen Echols Stephanie Eddings Carmela Elias Linda Elms Employees Charity Organization of Northrop Grumman Margaret Engman Arlene Epstein Shahna Esber Marilyn Fabricante Karen Fairbank Mitchell Fee Janice Feinstein Maria Ferrante Mark Fienberg Cynthia Fierro Victor Figueroa Robert Finkel Jennifer Fitzgerald Christina Flaxel Natalie Fousekis Jennifer Franco Monica Frederick Alexander Fuqua Sarah Fuqua Mae Gagajena Megan Galletty Rachel Garcia Danilo Garcia Sandy Garcia Ronnie Garcia Lee Garlington Ina Gartenberg Ed Gaudi Aaron George Nikki Ghiseline Lori Ghiseline Mary Jo Gillis Ronda Ginsberg Michelle Glaser-Weiner Tracey Glenn Lisa Goglia Anna Gorman Roderic Gorney Cheryl Gramza Chris Grapsas Maria Green Michelle Gruber Carmen Guzman Wendy Guzman Michele Haney-Fogerson Brian Hanrahan Tresa Harrington Ken and Kristin Harrison Tracie Harvey Kaleb Havens Jennifer Hendershott Rachel Henley Melody Hernandez Cheryl Hesse Joshua Hodas Daniel Hoffman Kim Holmes Anthony Hopkins David Huber Richard Huppertz Victor Huzvar Keith Ikemoto John Ivey Dana Jackson Tashia Jacques Jenny Jaque Franklin Jefferson Marissa Jerome Justin Johnson Byron Johnson Edmond Johnson D Johnson Stephen Jones Cynthia Jones Miranda Jones-Rodriguez Vida Joshi Susan Kahan Cecily Kahn Edward Kandel Lorin Karic Terry B. Friedman and Elise R. Karl Lila Kates Christine Kattengell Alison Katz Tracy Katz Bennett Kayser Monica Kelly Todd Kessler Karen Kim Hera Kimporo Grace Kirchner Dennis Kissick Paul Koistinen Tina Koopersmith KPMG Community Giving Campaign Joan Kraus Roxanne Kroll Steph L Elissa Lachman Shirley Ladd Tayra Lagomarsino Simon Lamson Genie Lara Susan Launer	Barbara Leake Annie Lee Bruce Lebowitch Jory Lelbach Lynn Levine Jeff Levitow Neil Levitt Donald Lieu Nancy Lienthal Barbara Lincoln Jahmella Lindsay Dimas Lizarido Local Independent Charities of America Francesca Lombardi Maria Lopez Jess Lucio Susan Lux Jeanene MacLean Julia Maicki Crista Maldonado Angela Maldonado Jennifer Marella Ashley Marie Jeff Marks Lisa Marks Rosalind Marmel Maria Marquez Jeffrey Marsh Bernadette Martin Jamie Martinez Fernanda Martinez Avery Martinez Mario Martinez Manuel Martir Lisa Masters Elena Mathis Donna Matson Chantal McCall Leslie McDonald Maureen-Therese McGroddy, RSHM Paula McKinnon Sandra McNeil Will McQuain Carissa Meade Melody Meady Carol Meredith Virginia Mersch Judith Messinger Debbie Miller Roy Minayoshi Cheryl Mramza John Mooney Carrie Moore Mark Morabito Berda Morley Fran Morris-Rosman Mike Moss Jill Moss Jill Muckenthaler Ruth Mullay Brian Murphy Shelly Myers Sherry Nagashiki Susan Nagy Nancy Nancy Chakravarty Jerry Neill Evin Nesbun Donald Newman Jan Newton Newton Police Athletic & Activities League Joann Nguyen Victoria Nourafchan Margaret Ellen O'Connell Neil O'Hanlon Ryan Olds Roger Ormae Yolanda Orozco Martin Ortega William O'Sullivan Anita Otano B. David Owen Edward Padilla Bill Palmer Edward Parker Nancy Paulikas Thomas Pavlak Melanie Pearl Chris Pegula Irene Perdomo Milton Perea Jenny Perez Lisa Perez Carolina Perez Ann Perich Ann Marie Perich Miranda and Nina Radman Hazel Phillips Russell Pitts Gary Platt Karen Kim Hera Kimporo Grace Kirchner Dennis Kissick Paul Koistinen Tina Koopersmith KPMG Community Giving Campaign Joan Kraus Roxanne Kroll Steph L Elissa Lachman Shirley Ladd Tayra Lagomarsino Simon Lamson Genie Lara Susan Launer	Jeff Rey Megan Richards Arlene Richards Kelleen Ridenour Shawnee Rios Scott Ritchie Brad Robbins Michelle Roberts Justin Robinson Fabiola Rodriguez Heather Rodriguez Teresa Rodriguez Pierre Romain Constance Roque Irene Rosa Gwendolyn Ross Danelle Sanders Jill Sanford Ethel Sanford-Smith Gwendolyn Santini Gigi Santini Joseph Santoris Stephanie Sasaki Janet Sawyer Brandon Sawyer Stephanie Schlosser Chris Schmidt Bryan Schmoldt Larry Schnaid Fred Schoen Elizabeth Schottger Judy Schroff Elizabeth Schwartz James Scott Kenneth Scott Margaret Scurry RSHM Freddie Segal-Gidan Monica Sekhon Bita Sharifi Donna Shapiro Rahm Sharif Devota Shay Rosemarie Sherman Jeffrey Sherman Susan Sherman Ko-Fung Shih Sam Shinazy Michael Sibay Scott Siegal Phoebe Simpson Rebecca Smith Barbara Smith L. Renee Smith Jerem Smith Joanna Snelling James Snowden Bennett Tramer and Sonya Sones Luis Sosa SPI Group Inc. Christopher Stanley Jennifer Steele Johannes Steinbauer Adela Steinman Carisa Stelmatt Linda Stone Yvonne Styles Jennifer Suero Carol Suchecki Pearl Suracho Kate Syatets Joel Swetow Joyce Szudzik Ida Talley Henry Tarica Jim Tennille The Boeing Company The Segal Company (Eastern States), Inc. Deborah Thierry Arthur Thomas Michele Thomas Debra Throckmorton Natcha Tran Richard Tuggle Maya Turre UBS Employee Giving Program Sonya Uliou United Way of San Diego County Pascal Uttinger May Uyekawa Alexia Valeaia Andrea Vargas Christine Vergara Chloe Vezo Peeranut Vetsuth Matthew Vodnoy Ron Wakasa Gloria Waldinger Timothy Ward Greer Wasson Light Watkins Caroline Weingarten Rose Weiss Thomas White William & Vicky Myers Survivor's Trust Philura Williams Perry Wong Tiffany Woods Lisa Woolf Yahoo! Employee Fund Henry Yang Maya Yaniv Michalis Yeros
---	--	--	---	--	--	--	--

**Seed Planters  
\$100 to \$249**  
Abbot Kinney Festival Association  
Gladys Adolfo  
Sydell Albert  
Eugene Alger  
Alan Amman  
Michele Andina  
Rock Anthony



Thanks to our In-Kind Donors of food, clothing, toys, bicycles, household items, program supplies and services. **WE LOVE YOU!**

#### Mountain Mover

HOK  
Rainmaker  
AmeriCorps VISTA  
Ayuda, Inc  
Food Forward  
Good News Foundation  
Latham & Watkins  
Los Angeles Clippers Foundation  
Los Angeles Regional Food Bank  
South Bay Workforce Investment Board  
The Hollywood Reporter  
Earthbuilder  
A Foundation for Kids  
America's Tires  
Anonymous Donors  
Bank of America  
Foundation Content  
Furlined Productions  
Good Work(s) Make a Difference  
Herbalife Family Foundation  
KHS-FM  
Living Spaces  
Michael McAfee  
Melanie Pearl  
Princess House  
The Ella Fitzgerald Charitable Foundation  
The Princeton Review  
The Shoe Crew  
The TJX Companies, Inc  
Whole Foods Market  
Provider  
All Peoples Community Center  
Archdiocesan Youth Employment Service  
Molly Cazzuti  
Chipotle Mexican Grill  
Daniel Hoff Agency, Inc.  
Dizzy Feet Foundation  
Dodgers Radio Network  
Hasbro Incorporated  
Herbalife  
Jive Live Entertainment  
JustFab.com  
Life Sail Inc.  
Los Angeles Dodgers  
Marymount High School  
Social Work Center  
The Children's Life Saving Foundation  
UCLA LEAP Program  
UPPABABY Distribution Center  
US Soccer Foundation  
Warner Bros. Entertainment, Inc.  
Marshall Wax  
Wescom Credit Union  
Westwood College  
**Harvester**  
Avery Dennison Foundation  
Backyard Productions

Bank of the West  
Marissa Barth  
Beachbody  
Berklee College of Music  
Big Sunday  
Bimbo Bakeries USA  
Bryan Cave LLP  
Capitol One 360 Cafe  
Los Angeles Clippers Foundation  
Center For Spiritual Living  
Chainsaw Edit  
City National Rewards  
Corona Clipper  
Clique Media, Inc.  
Community Career Development  
Lysa Cutler  
Daniel's Jewelers  
Pam Dawber  
Carolyn DeVinny  
Eden XO  
Fedex Ground  
Emma Gabay  
Gardena High School  
Barbara Glazer  
Philip Goglia  
Michelle and Cyrus Hadidi  
Marc Shmuger and  
Louise Hamagami  
Happy Tours Travel Agency, Inc.  
Ken and Kristin Harrison  
Sydney Holland  
Horses in the Hood  
Julie Housepain  
HUBCities  
ICM Partners  
Inside Out Community Arts  
Interscope/Geffen/A&M  
Jessamine Art+Design  
Sana Johnson  
Jojo Monster Graphics  
Kaiser Permanente  
Adam Keshan  
Keyes Motors, Inc  
Chris Lopes  
Los Angeles Unified School District  
AEWC  
Louis & Tiffany Starr  
Lurssen Mastering, Inc.  
Natascha Maidoff  
Manchester United Foundation  
Anna Marie  
Frank McKiernan  
MEND  
Microsoft  
Millennium Pension Services Inc.  
Mary Miller  
Wescom Credit Union  
Westwood College  
**Harvester**  
Avery Dennison Foundation  
Backyard Productions

Overbrook Entertainment  
PFC Nutrition  
Councilman Curren Price  
Radio Mercado, LLC  
Rotary Club of Los Angeles  
Natalia Rotman  
Salesforce Foundation  
Joe Selph  
Shoes for the Homeless  
Signature Estate & Investment Advisors  
Jackie Sisto  
Smith College  
Stanford University, Haas Center for  
Public Service  
Harry Suh  
Syndero  
The Ant Farm  
The Line Hotel  
The Ranch at Live Oak  
Time Warner Cable  
Tophand Manufacturing  
Unger Fabrik/One World Apparel  
Unified Grocers, Inc.  
Urban Land Institute Young Leader Group  
USC (Social Work Center)  
Wal-Mart  
Robin Ward  
Warner Bros. Consumer Products  
Weingart Center Association  
Wells Fargo  
Priscilla Wilson  
Sharon Wixen  
WJS Trust  
World Unity Organization  
Meghan Wright  
**Cultivator**  
911 For Kids  
Abbot Kinney Festival Association  
Andy Gump  
Priscilla Arellano  
Barbara Arnold  
Avalon Hollywood  
Bel Air Investment Advisors, LLC  
Best Sports & Holistic Chiropractor  
Boxer Films  
Robyn Browning  
Sue and Barry Brucker  
William Caceres Garcia  
Debbie Cerrito  
Steve Ching  
Coldwell Banker  
Linda Contreras  
Corporate Interior Consultancy  
Costco  
Currie Technologies  
Beata Czechowski  
Disney ABC Television Group  
Roelisa Dudang  
El Caballero Country Club

Elyse Walker  
Equinox  
Jay Fox  
Fox Group  
Fresh and Easy  
Frigees  
Griff Furst  
Martha Garcia  
Lina Ghazalian  
Girl Scouts of Greater Los Angeles  
Janel Glover  
Michelle Goddess  
Green Hasson & Janks, LLP  
Helen Greene  
Gursey | Schneider LLP  
James Harris  
Keith Hatcher  
Hollywood Orchard  
Home Depot  
Hoop Love Inc.  
Ich Bin Aiko LLC  
Inside The Scoops  
Ann Irmis  
Penelope J. Kalinowski  
Marcelo Jimenez  
JJ INT'L HOLDING LTD.  
John Paul Mitchell Systems  
Joie Dutch, LLC  
Jerry Kaufman  
Amalia Lam  
Sheri Lee-Lewis  
Troy List  
Michelle Logan-Stem  
Robin Lundgren  
Maria Manetta  
Robin McManus  
Memorial Health Services  
National Polytechnic College  
Northgate Gonzalez LLC  
Chaineese Older  
Ortho Mattress, Inc.  
Kristine Ortiz  
Randi Parent  
Staci Pontius  
R. Carlton Proctor, Jr.  
RCA Records  
Remi Beverly Hills  
Deanne Richard  
Ritz Carlton  
Rocker Bros. Meat & Provisions Inc.  
Schawk  
Seasons 52  
Nicole Shafer  
David Shaheen  
Six Flags Magic Mountain  
Smith, Henning & Berman Law Office of Wood  
Melissa Socarras  
Starbucks Coffee Company  
Carrie Stein  
Dawn Taubin

The Golden Rule Group  
Susan Tick  
Rob Troy  
UCLA Furnish the Homeless  
Brittany Urenda  
Liliana Urenda  
Yesenia Verde  
Rudy Washington  
We Care Wescom Credit Union  
Weingart Foundation  
Donna Weiser  
Westfield Century City  
WilmerHale  
Writers Guild of America, West  
Collen Yoshimura  
Jonathan Zeichner  
**Nurturer**  
Eduardo Abea  
Alevy Productions  
American Coast Title  
American Sewing Guild  
American Sewing Guild LA Chapter  
Azucena Amezcuita  
Anmo Cafe  
Charisse Anderson  
Josh Appelbaum  
Art@5thAlley  
Artistic Endeavors  
Atlantic Records  
Beats Music  
Blanca Beiber  
Bottega Louie  
Vivian Bowers  
Bowers & Sons Cleaners  
Sharon Brown  
Darrell Bryson  
Winona Bustos  
Cabbage Patch LA  
Cal South  
California Water Service Company  
CalSAC Trainer Network  
Anabel Luna  
Linda Lyke  
Nico March  
Elizabeth Martinez  
McDonald's Operations Association of Southern California  
Michael McKee  
Sherriall McMullen  
Juan and Renia Mendez  
Courtney Mizel  
Morgan Stanley  
Steve and Ten Morrow  
Mt. St. Mary's Ambassador Program  
Nike Town Beverly Hills  
Nonprofits' Insurance Alliance of California  
Zein Obagi  
Andrea Oleas  
Pacific Rim Printers & Mailers  
Michelle Panuco  
Peterson Event Lighting

Shelly and Jim Pettis  
Julie Pliat  
Amanda Plisner  
Alexander Pratt  
Veronica Quijada  
Gilbert Radillo  
Ralph Bunch High  
Sandra Rapke  
Del Richardson-Price  
Arlene and Jerry Rosin  
David S. Meshulam  
Anita Salgado  
Sanrio  
Lisa Schaffer  
Erik Schott  
Second Baptist Church  
Deysi Serrano  
Shape Up LA  
Shoot for Sports  
Short Order  
Silver Oak Cellars  
Sisterhood Book Club  
Skin Laundry  
Marshall Smith  
Elva Solorio  
Sony Music Entertainment  
Nova Lovells  
St. St. Philip's Episcopal Church  
Staples Center Foundation  
Supper Club Los Angeles  
Bernyce Talley  
Richard Tarczynski  
Lucretia Taylor  
Teleguy Family  
Telepictures Productions  
The Da Camera Society of  
Mount St. Mary's College  
The Galley Restaurant  
The Shoshanna Collection  
The Siegel Group  
Jason Tomarken  
Tom's Urban LA LIVE  
Tri-Mountain  
Turner Entertainment Ad Sales  
Tyesha  
Kathryn Tyus-Adair  
Uber Content  
Irene Valdovinos  
Leslie Valenzola  
Blanca Vigil  
Chole Vignolles-Jeong  
Destiny Vincent  
W Hotel  
Walden Surfboards  
Walt Disney Studios  
Naissan Wesley  
Imani Wilkinson  
Devin Williams  
Shirlee Wolf  
Solly Yamin  
Yankee Peddler, Inc.

John Zeichner  
**Seed Planter**  
Elizabeth Abeja  
Rosa Aguilar  
Armine Agulian  
Genie Alvarez  
Anakali  
Michele Bignardi  
BMG Chrysalis  
Linda Boyd  
Larisa Capodici  
Mike Chearney  
Susana Concha  
David Cooper  
Dave & Buster's, Inc  
Tyronne Dinnon  
Doughboys Cafe and Bakery  
Fabiulus Cucina  
Kara Foley  
Laura Gail Diamond  
Iliana Garcia  
Golden State Water Company  
Bob Gray  
Marjorie Heller  
Natalie Hernandez  
Krystal Johnson  
Susan Kasenow  
Andy Katz  
Joyce Kelley  
Berit Kener  
Magnolia Hollywood  
Kara Melzer  
Michael Levin Trading  
Lani Monos  
La Shawnda Moore  
Mosaic Church  
Original Original Tommy's World  
Famous Hamburgers  
Sandra Portnoff  
Janet Rappaport  
Melissa Richardson Banks  
Gabriel Ruiz  
Danielle Sanders  
Sally Schaffer  
John Spokes  
Simply Nutrition  
Sugarfina  
Rick Taub  
Tender Greens  
The Hollywood Corner  
Dominique Townsend  
Daniel Vai  
Margaret Venneri  
Nunny Walker

We're sorry if we overlooked you, misspelled or incorrectly listed your name. Please let us know and we will gladly correct our records for future newsletters, [info@apch.org](mailto:info@apch.org)

continued from page 1

ground on Phase One in January 2015 and open the new spaces starting in the summer.

We are incredibly fortunate to

have the support of architectural firm HOK and engineering firm Sofel Bouquet to guide us through the design process, and we've even

involved some of our students in the brainstorming sessions.

Stay tuned for progress reports and news on the progress of Phase

One... and then we move on to Phase Two. Please let us know if you'd like to get involved—we need all the support we can get!



Rendering of Annex Entry and Gallery Space.



Rendering of multi-purpose Performing Arts Space.



## MESSAGE FROM THE CHAIRMAN OF THE BOARD



I recently joined my fellow Directors for our annual Board Retreat. Spanning two days, this is our core strategic planning session of the year, covering near term events, such as our annual budget, and longer-term stra-

tegic issues, such as our changing neighborhood and our strained infrastructure. Every year I come away with a stronger appreciation for my fellow Directors. The issues we discuss are not easy, and invariably require trade-offs. Every participant arrives with an open mind and heart, and is a constructive contributor. This year's session was no different. Under the great leadership of our Executive Director Jonathan Zeichner, we are now able to serve 20% more children than five years ago and we have added programs in STEM, Nutrition, Gardening, Digital Media, SAT & College Preparation, and more. Nonetheless,

we have a waiting list of 500 young people, and we are aware that many in great need are not even on that list and will require more direct outreach. At the Retreat, we made tangible progress on addressing these issues and deepening our commitment to the South Central Community. I thank my fellow Directors for their passion and service, and thanks to all of our contributors, volunteers, and staff that make APCH possible.

Cyrus Hadidi,  
Chairman of the Board of Directors

## YOUNG PROFESSIONALS SUPPORT APCH BY SERVING ON OUR LEADERSHIP COUNCIL!

The APCH Leadership Council (LC) is a dynamic and diverse group of young professionals engaged in community involvement and service through APCH. The "LC" produces several important events and special initiatives in support of our mission, including our annual Stars & Strike's

Celebrity Bowling and Poker Tournament, and the A Place Called Home for the Holidays Toy Drive.

This year the LC has been working hard to activate an exciting new Strategic Plan, electing new officers and a focusing on even more outreach and also involvement at the

Center, to increase its impact in the community we serve.

AS APCH continues to grow, the LC will be expanding its membership. To learn more about the LC and how you can get involved, please visit our website and click on GET INVOLVED or call Marshall Smith at 310-699-0814.

## APCH BOARD WELCOMES SEVEN NEW DIRECTORS

**Sue Brucker** is a community activist,



artist and designer. A lifelong volunteer, Sue completed two terms

as President of Temple Emanuel, where she currently chairs the Capital Campaign; and she sits on the Boards of the URJ and Camp Newman.

**Barry Brucker**, President and CEO of



Independent Ink, Inc, served two presidential terms on the Beverly

Hills Board of Education, was elected to the Beverly Hills City Council in March 2005, and served two terms as the Mayor of Beverly Hills.

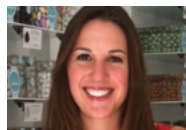
**Dawn Campbell** is Vice President of



Global Contact Center Strategies at Herbalife International.

With over 20 years experience in customer service, contact center operations, project management & event registration.

**Allison Crandall**, Sales Manager,



Corporate Gifts at Skirball Cultural Center, specializes in creating

marketing initiatives for all types of corporations, from financial services and real estate to career advancement and social needs based companies.

**Jonathan Hodge**, Vice President,



Investments at UBS Financial Services, has volunteered at APCH

since 1999 as a mentor and tutor, and cofounded our annual "Home for the Holidays" Toy Drive.

**Alex Pratt**, President of Beacon Group



Development and Consulting, manages a portfolio for a

major tax credit syndicator, and develops low income housing properties in Southern California.

**Sandy Walia**, Area President for Wells



Fargo's Greater San Gabriel Community Bank, and a 17-year

Wells Fargo veteran, oversees more than 1,000 team members in 54 banking stores.

## BOARD

**Jonathan Zeichner**, *Executive Director*  
**Debrah Constance**, *Founder*

### BOARD OF DIRECTORS

**Cyrus Hadidi**, *Chairman*  
**Doug Atchison**, *Co-Vice Chairman*  
**Dawn Taubin**, *Co-Vice Chairman*  
**Melissa Palazzo**, *Treasurer*  
**Maryellen Zarakas**, *Secretary*  
**Barbara Arnold**  
**Robyn M. Browning**  
**Barry Brucker**  
**Sue Brucker**  
**Dawn Campbell**  
**Sister Patricia Connor**, *RSHM*  
**Allison Crandall**  
**Barbara Glazer**  
**Jill Goldman**  
**Louise Hamagami**  
**Jonathan Hodge**  
**Robert Israel**  
**Alan Melina**  
**Julie Pilat**  
**Alexander Pratt**  
**Howard Sherwood**  
**Stephanie Sherwood**  
**Hamed Tavajohi**  
**Sandy Walia**  
**Marshall Wax**

### LIFETIME DIRECTORS

**Robert Davidow**  
**Peter M. Gilhuly, ESQ.**  
**Kenneth Karmin**  
**Bruce Newberg**  
**Stephen Winston**

### LEADERSHIP COUNCIL

**Allison Crandall**, *Chairman*  
**Amanda Plisner**, *Vice-Chair*  
**Maggie Venneri**, *Secretary*  
**Justin Woodhull**, *Treasurer*  
**Marshall Smith**, *New Membership Officer*  
**Chris Ceccotti**  
**Kate Christensen**  
**Allison Copes**  
**Danielle Djansezian**  
**Sarah Duru**  
**Bennett Johnson**  
**Jennifer Koster**  
**Lauren Krapf**  
**Alex Larson**  
**Lisa Masters**  
**Tamara Muzac**  
**Katie Petzak**  
**Prophet**  
**Lori Rischer**  
**Louie Rubio**  
**Maya Shah**  
**Alexis Spraic**



Over the last year, we have served more than 1,300 youth, 8-21 years of age, and thousands more family and community members through food distributions, volunteer days, and community movie screenings and Back to School and Holiday Festivals.







## YOU CAN MAKE ALL THE DIFFERENCE IN THE WORLD!

Support APCH families in great need—make their holiday wishes come true! Or help year-round.

To enroll as an Adopt a-Family Donor please go to:

apch.org >GET INVOLVED  
>**ADOPT-A-FAMILY**

Or, complete this form and return by fax, mail or email:

A Place Called Home  
Attn: Adopt-A-Family  
2830 S. Central Ave.  
Los Angeles, CA 90011  
Fax (323) 232-0139  
adoptafamily@apch.org

Name \_\_\_\_\_

Address \_\_\_\_\_

Phone \_\_\_\_\_

Email \_\_\_\_\_

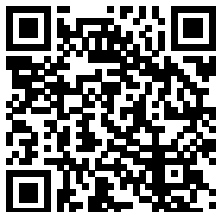
I would like to participate in:

- ☐ HOPE (year round essentials)  
☐ Holiday Edition

Please select size of recipient family and donation level you prefer:

- ☐ 2 - 3 ( up to \$250 )  
☐ 4 - 5 ( up to \$400 )  
☐ 6 - 7 ( up to \$600 )  
☐ 8 or more ( up to \$800 )

The amount you give is up to you. You may choose to adopt more than one family.



SCAN THIS CODE TO WATCH THE APCH VIDEO ON YOUR MOBILE DEVICE

## JOIN THE APCH FAMILY - Your donation provides immediate and long-term support to youth in South Central Los Angeles

All APCH programs are free to the children and families we serve and any amount will make a difference! HERE ARE SOME COSTS FOR THE PROGRAMS WE PROVIDE:

- Sports, Fitness, Yoga and Sportsmanship activities for a child for a month - \$20
- Professional Dance Instruction and equipment for a child for a month - \$50
- Mental Health Counseling for a youth who needs extra support for a month - \$82
- A month of Tutoring for five children who are struggling to keep up at school - \$175
- Snacks and meals for ten children for a month - \$320
- A Field Trip for 25 children - \$500
- Academic Guidance/College Prep for 15 teenagers for a month - \$1,200
- Tuition support for a young person who will be the first in his/her family to attend college - \$2,500-\$6,000

☐ \$25 ☐ \$50 ☐ \$100 ☐ \$250 ☐ \$500 ☐ \$1,000 ☐ Other \$ \_\_\_\_\_  
☐ I want to Keep On Giving: Please make automatic monthly donations of: \$ \_\_\_\_\_ with my credit card.

Payment method: ☐ Check ☐ MasterCard ☐ Visa ☐ AmEx ☐ Discover

( Please make check payable to: **A PLACE CALLED HOME**, 2830 South Central Ave, Los Angeles, CA 90011 )

Name on credit card: \_\_\_\_\_ Card #: \_\_\_\_\_ Exp: \_\_\_\_/\_\_\_\_/\_\_\_\_

Address: \_\_\_\_\_ City: \_\_\_\_\_ State: \_\_\_\_\_ Zip: \_\_\_\_\_

Phone: \_\_\_\_\_ Email: \_\_\_\_\_

- ☐ Please make this gift in memory/honor of: \_\_\_\_\_  
☐ My company will make a matching gift. I have enclosed the form  
☐ Please do not include my name in any list of published donors  
☐ I am interested in naming APCH in my estate plan. Please contact me at \_\_\_\_\_  
☐ I am interested in contributing to the APCH Endowment. Please contact me at \_\_\_\_\_  
☐ I am interested in volunteer opportunities at APCH. Please contact me at \_\_\_\_\_  
☐ I am interested in learning more about serving on the Board of Directors or Leadership Council

**CHANGING THE WORLD STARTS AT HOME - THANK YOU FOR YOUR INVESTMENT IN OUR YOUTH!**

2014	WHAT	WHEN & WHERE	DETAILS	GET INVOLVED
SEPTEMBER 6	USC DENTAL CLINIC	APCH	Full dental service at APCH provided by USC Ayuda.	By appointment only. To book contact: Ana Maria at anamaria@apch.org
OCTOBER 31	FALL FESTIVAL/HALLOWEEN PARTY	APCH - ALL DAY	APCH treats the kids to a spooktacular day of haunting events!	Calling all volunteers. Please email volunteer@apch.org
NOVEMBER 22	THANKSGIVING FOOD SORTING	APCH - 9AM-12PM	Sorting food for Thanksgiving distribution.	Calling all volunteers. Please email volunteer@apch.org
NOVEMBER 26	COMMUNITY THANKSGIVING DINNER & GROCERY DISTRIBUTION	APCH - ALL DAY	APCH Distributes Groceries and Serves Dinner for 1,200 community members in need.	Calling all volunteers. Please email volunteer@apch.org
DECEMBER 2	HOLIDAY TOY DRIVE PARTY	BARDOT IN HOLLYWOOD 7PM-10PM	A hip & fun holiday party at one of the hottest spots in LA. Admission \$20 or a new \$20 toy	Visit www.apch.org for details
DECEMBER 5	TREE LIGHTING CEREMONY & MOVIE NIGHT	APCH - 5PM-8PM	Join us for our Tree Lighting Ceremony & stay for hot chocolate and Movie Night. Make sure to bring warm blankets for the whole family!	Bring an ornament & join in the fun! Volunteers needed. Please email volunteer@apch.org
DECEMBER 10	APCH GALA FOR THE CHILDREN	BEVERLY WILSHIRE HOTEL - 5PM-9PM	Please join us for our biggest fundraiser of the year.	For tickets and sponsorship information please go to www.apch.org and click TICKETS/SPONSORSHIPS or contact Rebecca Mizrahi at (323) 904-4400 or rebecca@grantevents.com
DECEMBER 13	ADOPT-A-FAMILY	APCH - ALL DAY	Make a difference to others this holiday!	Pledge your support adoptafamily@apch.org
DECEMBER 19	APCH HOME FOR THE HOLIDAYS PREP AND SETUP	APCH - AFTERNOON	Help us decorate the center & sort toys, books and clothing to be distributed to South LA families.	Calling all volunteers. Please email volunteer@apch.org
DECEMBER 20	HOME FOR THE HOLIDAYS A FESTIVAL OF FREE GIFTS FOR HUNDREDS OF FAMILIES!	APCH - ALL DAY	A fun & festive day for hundreds of South Central families in need.	Calling all volunteers. Please email volunteer@apch.org
DECEMBER 23-JAN 4	APCH HOLIDAY BREAK		APCH Closed - Center reopens Monday, January 5, 2015.	
2015	WHAT	WHEN & WHERE	DETAILS	GET INVOLVED
JANUARY 3	JIVE LIVE - NEW YEAR'S RUN		Join the Race! Train up and get ready for the 3 <sup>rd</sup> annual Jive Live New Year's Race, with APCH as the Official Charity!	Get fit & raise funds! Register to join Team APCH. Get more info: www.newyearsrace.com
JANUARY 24	VOLUNTEER AWARDS CEREMONY	APCH	Join us as we recognize our outstanding volunteers.	For more info, contact Sarah at volunteer@apch.org
TBD	STARS & STRIKES CELEBRITY BOWLING & POKER TOURNAMENT	7PM-11PM PINZ IN STUDIO CITY	The APCH Leadership Council's annual fundraising event.	For ticket & sponsorship information please contact Di Lamm at (323) 232-7653 x2324 or dl@apch.org
APRIL 10 & 11	CINDERELLA & PRINCE CHARMING PAY IT FORWARD PROJECT	APCH	South Los Angeles teens learn about inner beauty, strength & outer generosity, and go home with fabulous dresses & suits for Prom & Graduation.	Donate dresses or suits. To volunteer, email cinderellaproject@apch.org
TBD	BIG SUNDAY	APCH - 10AM-4PM	Come help beautify APCH. Volunteer today!	Calling all volunteers. Please email volunteer@apch.org
MAY 21	GIRLPOWER AWARDS LUNCHEON & BOUTIQUE	THE BEVERLY HILTON HOTEL - 10AM-2PM	This event raises funds for the APCH GirlPower Project & other APCH programs that inspire inner-city youth.	For ticket & sponsorship information please contact Rebecca Mizrahi at (323) 904-4400 or rebecca@grantevents.com
AUGUST 1	BACK TO SCHOOL GIVEAWAY	APCH 9AM-3PM	APCH distributes backpacks and school supplies to our members and community of South Central LA	Donate backpacks and school supplies info@apch.org

For more information on upcoming events, visit our Events Calendar at <http://www.apch.org/news-events/calendar-of-events/>