

A PLACE CALLED HOME

CHANGING THE WORLD STARTS AT HOME



REACHING FOR THE FUTURE

Like most nonprofit organizations, A Place Called Home was conceived to respond to an urgent need. In 1993, after decades of oppressive poverty, drugs, gangs and violence, South Central was reeling from the explosion set off by the Rodney King verdicts. People's futures were going up in the smoke of burned out storefronts and glowing crack pipes. Public schools were dysfunctional and dangerous and they were preparing the young people in the community to do little more than maintain the status quo. Black and brown kids were killing each other over street numbers and Jordans.

A Place Called Home was one of several agencies that sprouted from the cracked sidewalks to respond to the immediate needs. Starting with 12 teens in a church basement, our mission was straightforward: keep kids off the streets and safe from harm, out of gangs, feeling loved, and focused on

positive opportunities.

Nearly 24 years later, APCH has grown into a 30,000 square foot campus (including The Bridge, our newly opened teen and performing arts center!) daily serving hundreds of young people from eight years old into their mid twenties. Our programs range from Educational Support and Counseling, to Athletics and the Arts. We serve and distribute healthy food from our kitchen and three organic gardens; we send nearly 100 youth to college on scholarships each year, and we partner with JVS, LA Trade Tech and corporate partners to offer vocational preparation, training and job placement. We engage families and the community, too- we even help to orient LAPD officers newly assigned to the neighborhood.

Things have gotten better in South Central, but poverty and its impact still loom large and the odds are still

stacked against most young people that grow up here.

Here's what we've come to understand: responding to need and solving problems is necessary and important, but that's just where the work starts. Preparing, equipping and inspiring people to break negative cycles, get ahead of their problems and find a better way to live, that's what brings about real change. That's why we build pathways from our front door to college and good jobs. That's why we help young people develop values and a sense of importance and responsibility so they can break negative cycles and create new legacies. That's why we are growing to serve more young people and families and why we are inviting them to make change in the world while they make change in their own lives.

The best way to reach the future is to create it!

OUR MISSION

A Place Called Home provides a safe, nurturing environment with proven programs in arts, education and wellness for the young people in South Central Los Angeles to help them improve their economic conditions and develop healthy, fulfilling and purposeful lives.

WHAT'S INSIDE

Executive Director Message	2
Programs	3-9
Alum Voices	9
Community	10
Events	11
List of Donors	12-14

EXECUTIVE DIRECTOR'S MESSAGE



I am writing this message on the eve of the U.S. Presidential election. By the time you read this newsletter, we will have a new president. Let's hope she or he is up to the task ahead during these volatile times.

As difficult and painful as the political process has been this time around, it has done a service by pulling the veil aside on so much of the

unfinished business in this country around race and class and xenophobia, and for that I am grateful. As a nation, it's important that we face these issues directly and continue to assert the dignity and rights of all people.

Whoever is in the White House, at APCH we are moving forward with growth; strengthening our commitment to helping youth access economic opportunity and equity via a new vocation/career training and placement program, adding a program to educate, empower and include youth and parents in the processes and civics of change in the neighborhood, developing a community-based police training initiative, and opening The Bridge, a new Teen & Performing Arts space that will support our visual and performing arts programs and also host a variety of cultural and community events, including dialog about the

needs and aspirations of our community.

With your support and participation, we remain intent on empowering youth of all colors and backgrounds and preparing them to step into the world equipped with empathy, values and integrity and as leaders and advocates for "those truths we hold to be self-evident."

There's a saying, "If you don't have a seat at the table, you're probably on the menu." At APCH, we want our youth not only to be at the table, but in the kitchen creating the recipes and stirring the pot!

Yours in service,



Jonathan Zeichner
Executive Director

YOUTH VOICES

THE SUMMER FLING

Summer is me
Summer is happy people all around
Summer is heat waving
to the people.
Summer is parties and teens
having fun.
Summer is relaxing.
Also summer is me in pain.
Summer is people going to the
hospital because of the
heat wave.
Summer is teens getting drunk
and sick at parties.
Summer is you eating a big tub of
ice cream and crying for days
because of a breakup.
Summer dies when school comes
and it gives back the
sad new and madness.

- Stephanie

APCH STAFF NEWS!

APCH is fueled by love, and our team is full of it! Congratulations to our amazing Dance Coordinator **Jewel Deleagall**, our new Director of Operations **Julie Poulos**, and **Maria Sosyan**, our new Communications and Events Manager on their recent nuptials! In 2015 **Melody Hernandez**, our H.R. Coordinator, welcomed baby Isla to her family, and following her was **Gilbert Radillo**, Assoc. Director of Corporate Relations and Community Engagement, who welcomed baby

Vienna! **Alex James**, our Athletics Supervisor will be joining the parent club very soon! New faces bring new

beginnings and we are fortunate to be growing and welcoming new staff and volunteers! If you are interested in

working at APCH please visit our website and click on our EMPLOYMENT page for job opportunities.



Jewel Deleagall



Maria Sosyan



Melody Hernandez



Gilbert Radillo



Alex James



Come meet the friendly and dedicated staff at APCH. Sign up today to join one of our monthly tours: <http://bit.do/APCHTour>

DIRECTOR OF PROGRAMS MESSAGE



Joining a new family is a bit like being a detective. I felt like I was doing some detective work when I first started at APCH, investigating, listening, and exploring in order to fully understand the heart and soul of the place. And what I've discovered is that APCH

is many things. APCH is first and foremost a home – a home base where you are embraced, accepted and seen. When you are here, you receive a nutritious meal and are welcomed by a team of attentive and compassionate staff members and volunteers. You are encouraged to pursue your dreams, and challenged to explore new possibilities. APCH is a home, but it is also a cheering section, a celebration, and sometimes a retreat.

APCH's spirit reminds me so much of my parents' spirits. Despite the hardships of raising five daughters on limited means, my parents' belief in me and my siblings never wavered.

Nothing was impossible if we worked hard and were kind and generous towards others. I feel privileged to be able to provide to our members a similar type of support through our programs. Every day we have the opportunity to fill their wells with messages of encouragement, so that when they encounter hardship, pain, heartbreak, they can draw on the firm sense of self-worth that they developed while they were here with us.

Christina Sánchez
Director of Programs



APCH programs and services are delivered via five core departments:
Educational Services,
Health, Nutrition & Well-being,
Creative Expressions,
Bridge to the Future, and
Community Engagement & Volunteerism

OUR SUMMER RUNNETH OVER! SUMMER 2016 AT APCH

We had an amazing summer at APCH, offering close to ninety field trips! Our members went surfing, fishing,

sailing, hiking, camping, horseback riding, and got to see new parts of our city and region along the way. Field trips

are one of the ways we broaden our members' horizons. When we expose them to different neighborhoods, new experiences and people, they see possibilities that they may not have considered before. We visited museums, concert venues, nature preserves, farmers markets, and barns for rescued animals. And, with the help of some of our committed corporate partners, we were able to offer three all-agency field trips to the beach and to Griffith Park, where volunteers joined our members for activities and fun sports competitions. Thank you **Kelton, The Peninsula Beverly Hills, and Hyland's!**

And, every day right here at APCH our members were creating new and original work. Our Digital Media students created and screened original films for our Be Kind Rewind project. Our Art students created new 3D installations for our Family Room and delighted us with inventive body-operated puppets during our annual Puppet Parade. Our musicians and dancers created a music video for an original song (tinyurl.com/jlzlrlnq), while our recording studio students got busy working on this year's APCH album. This summer's creations, reminds us all of the amazing creativity young people are capable of manifesting when they get the chance to explore and have the support to develop their ideas and interests.



THANK HEAVEN FOR OUR SUMMER ANGELS!

Each summer when our daily hours double, we employ up to 25 Summer Associates to support an amazing array of programs, services, field trips and back-to-school prep. Here's their perspective:

As returning Summer Associates we know how crazy summer at APCH can be; crazy as in good, fun, and exciting. Our job was to keep the members safe but also to participate and interact in all the activities. This gave us the opportunity to see the members enjoy new experiences, make new friends, build new things, conquer old fears, and most importantly, have big fun! We watched them become better athletes, musicians, cooks, photographers, and fashion designers. Our summer was filled with adventures like ice skating, surfing, horseback riding, hiking, sailing, and beach trips. From water balloon fights to riding the biggest roller coaster at Six Flags, the members (and we!) had the summer of a lifetime!

Nicole Romero and Diana Tapia,
APCH Summer Associates 2016

*The best way to find yourself is to
lose yourself in the service of others*
- Mahatma Gandhi



BUILDING ENGINEERS FOR THE FUTURE

The Idea of LEGO Club came from members themselves, who wanted to share their love for building, and it was supported by LEGO brick donations from individuals. Each week members have the opportunity to showcase their talents by creating new designs and structures.

During the summer, the Ed Services Dept. provided Building for

the Future, a class in which our members showcased their creativity by building challenging mazes and making characters from LEGOs. The crossover with our STEAM subjects challenged members to draw on science, technology and math and to think as if they were engineers of the future. Which, of course, they are!



HIGH SCHOOL PROGRAM CONTINUING IN NEW SPACE!

The 2015-2016 school year marked 14 years of continuation high school collaboration with LAUSD's Adult Education and Work Center (AEWC) program. B. Baylis joined the AEWK team at the start of the year and did a great job assuming the role of advisor. She served as a reliable and consistent liaison to APCH while she was

here, and we were able to serve 111 students who needed support to get back on track. This fall our AEWK students returned to a new AEWK Advisor (welcome **J.P. Flores**) and a newly named program, ACCT, in The Bridge, our new Teen & Performing Arts Center We look forward to another great year together!



THE GIFT OF GUIDANCE

The Davidow Counseling Center, headed by **Dr. Yvonne Styles**, continues advancing its mission to serve APCH members and families.

Whether the need is in the area of family functioning, behavioral adaptation or mental health, the counseling team is dedicated to offering prompt and reliable service to all constituents. The pace and scope of our work is always driven by the needs articulated by the community and is made possible by our generous donors who continually help the counseling team create unique opportunities to enrich

and improve the lives of our families. The annual Adopt-a-Family program has surpassed previous records and now includes over 150 families matched. We are also now offering free bi-lingual parenting classes and are providing groups routinely for our teen populations. Our team efficacy has been improved by creating a more dynamic collaborative spirit within the agency. All of these initiatives have combined to make 2016 the best year ever for the counseling professionals in THE DAVIDOW COUNSELING CENTER!



In 2016, membership retention remained at 93%.

Unfortunately, that means approximately 750 children are waiting for a slot to join A Place Called Home





OUR GARDENS ARE GROWING!

APCH is serving thousands of healthy meals each month and distributing tons of healthy groceries to families in need – much of it locally farmed and organically grown!

In summer of 2016 we broke ground on construction and installation of our third and largest community garden yet – a partnership with St. Patrick's Church on Central Ave. – stay tuned for progress reports!

In another exciting collaboration, we partnered with the nonprofit **Piece-by-Piece** on the Central Ave Garden Mosaics Project. This community art initiative, funded in part by the **L.A. Department of Cultural Affairs**, is

empowering South LA youth to work with law enforcement and community members to create a permanent mosaic art installation at our APCH / Newton Division Community Garden. In workshops throughout July 2016, APCH members and LAPD representatives and cadets took inspiration from the seal of Los Angeles and the natural world of the garden to brainstorm designs for the installation.

At the Central Ave Jazz Festival, our youth and hundreds of community participants fabricated mosaics from the designs. Stay tuned for photos of this collaborative art piece once it is installed!



ATHLETICS ADVANCE HUMANS OF ALL GENDERS



Historically, sports have been used to develop skills, fitness... and character. Leadership, confidence, teamwork and goal-setting are building blocks for a successful sports team and for successful individuals. Due to lack of access and social bias, many young girls have minimal opportunities to participate in organized sports or are not properly supported when they do. Sadly, many girls grow into women feeling that they failed at sports and so they lack confidence in themselves as physical beings and potential athletes.

According to womenssportsfoundation.org, by age 14 girls are dropping out of sports at two times the rate of boys. Lack of physical education programs in schools and limited opportunities to play sports in high school and college contribute to the reasons women turn away from athleticism. In the neighborhood surrounding APCH,

there is a shortage of sports courts and parks for anyone to regularly engage in sports.

The APCH Athletics Department fills these deficits and breaks down gender stereotypes one caught ball, touch-down, spike and free-throw shot at a time. Every day we provide entry level to advanced classes and a fun, challenging and safe environment for all of our members to develop as athletes alongside each other.

Whether on our athletics field or any other program space on our campus, we welcome and encourage all our members to participate to the best of their abilities, expand their limits, and go for the gold in terms of their own personal growth. When you compete with yourself to improve on your personal best every day, you are doing more than winning, you are advancing on your path to a great life!



We serve more than **5,000 fresh, healthy meals** to youth and distribute **400 bags of groceries** to families each month.



STAYING TUNED WITH THE APCH MUSIC DEPARTMENT



The Music Department is always busy with new developments in performance and programming. Over the years, we have developed many iterations of our advanced music ensemble (the APCH Band), 29 Live. With so many of our students going off to Berklee College of Music and other advanced programs this fall, we are busy developing our next group of young lions, some of whom are very serious about the arts as a career path.

Over summer 2016, we focused on introducing our younger students to alternative paths in music through DJing, beat boxing and applications in music technology. We have been further bolstering their experience by partnering with 'Give A Beat' an orga-

nization that provides DJ and percussion workshops. And, if you attended our 2015 Gala, you may have seen the debut of 'Without You,' an original song written and performed by several of our members. We have completed the music video for the piece, which is being included in an important documentary on the subject of fatherhood by U.K. based filmmaker, Ben Gregor. Joining youth from all over the U.S., several of our members will be in the film sharing their own stories, and the final product is going to be very powerful. We can't wait for the film to be completed! In the meantime, check out "Without You" at <http://tinyurl.com/jlzlrlng>.

Stay Tuned!

LAYING TRACKS – NEW APCH ALBUM IS READY TO SPIN!



This year in the APCH Recording Studio our young musicians, producers and engineers have been hard at work writing, recording and collaborating on our annual original CD. Jaya Hodge's Song "Sorrow" will tell her story of loneliness, while member Anthony Rosales will share his story with the song "I Can't Make You Love Me". Returning voice Tamia Staples shares songs of strength and aware-

ness with her tunes "Life is Good" and "Take Off," and the album rounds out with work from Amor Baeza and guests Sleuth Dog, the UCLA Sax Quartet, and APCH Poetry Students, as well as a few surprises. Check out all of our original albums at tinyurl.com/jj-9dlgq to give you a deeper dive into the musical soul of the APCH Music Program and Recording Studio.



Each year at APCH our music department gives 20 performances, creates 1 original CD, and provides 3-5 scholarships to the Berklee College of Music summer program in Boston.

DANCING TO A BETTER LIFE

As with all of our arts programs, Dance at APCH provides opportunities for absolute beginners and dedicated artists and everyone in between.

The APCH Dance Company is a lead-

er on our campus. Comprising 20 dedicated young artists, our dancers inspire all APCH members to be their best and work toward excellence at APCH, in school and in the community. To earn

an invitation to join and embrace the discipline and rigor of being in the Company, members must demonstrate a commitment to dance and also to academic rigor and being exemplars and

ambassadors for R.E.A.C.H., the five pillars of APCH (Respect, Empathy, Accountability, Courage, Hope).

Through focus and hard work, Company dancers develop themselves and forge deep friendships that build support and community. Whatever their ultimate aspirations and professional goals, through dance these members develop life skills and become creators and contributors in the world – attributes that will serve them for their whole lives.

The APCH Dance Company performs at events throughout the City, and will continue to grow its span of exposure and partnerships. As with all of our programs, the intention is that dance will be a vehicle for inspiration and service through creative expression and manifestation of the best of humanity, with all its beauty and power.





DEEP IN THE ART OF APCH



There's always a lot going on in the APCH Art Studio! This year has been momentous, with the production of large scale and experimental art projects. Members were introduced to electronic components and got to create 3D paintings with animated elements courtesy of a small servo motor installed behind their canvases. They went EL (electroluminescent), using wire to bend and shape faux neon shapes. And, they got celestial

by creating pieces with embedded LED "stars" (light emitting diode) in a show of galaxy paintings. By collaborating with each other in groups and partnerships, our artistic members learned that sometimes big things can be accomplished together that would be a struggle or even impossible for an individual to achieve.

Summer 2016 was even more ambitious than ever. Our young artists constructed a large scale installation



in the APCH Family Room entitled, "Stories Come to Life." The youth drew, painted, cut out, and installed storybook characters leaping from giant books with pages from recycled tomes. Our annual Puppet Parade had members face their fears by building giant parade inspired puppets and also performing in front of their peers. The artists were nervous, but after the performance they expressed how much fun they had. At APCH, art has a

powerful impact on the members, teaching them that it's okay to experiment and make mistakes and it's all right to be silly and have weird ideas. After all, if not for the "creatives" among us, there would be no innovation. Every young person that crosses the threshold into our art studio is given the support and freedom to explore and develop their creativity with lots of encouragement and no judgment. Art = Life.

MOVING PICTURES

Our Digital Media Department took things to a new level in 2016. Our Street Photographers team went on daily walks around the neighborhood and captured beauty in some of the most overlooked corners of South Central. Driven by fresh imagination and strong curiosity, our young photojournalists created strong images that were not only displayed at APCH, but got published on Zocalo Public Square <http://www.zocalopublic-square.org/2016/07/07/in-south-l-a-growing-interest-in-urban-gardening/viewings/glimpses/> in a series about the rich culture and changing dynamics in our neighborhood. They even



got compensated for their work just like the professional photographers that contribute to the site.

On the filmmaking front, our annual Be Kind Rewind Project crossed new boundaries as members developed their original ideas into scripts and then made 14 short films that came alive on the big screen during one of our APCH Summer Movie Nights, where an audience of 200+ community members and guests enjoyed an evening of vision, humor, and power. Check them out on our Youtube Channel (www.youtube.com/apch2830)!



Each year APCH provides more than 150 fun and educational field trips to concerts, museums, hikes, sailing, horseback riding, camping and the beach! We also take kids to visit colleges all over California!



16 THINGS YOU NEED TO KNOW ABOUT BRIDGE TO THE FUTURE

- 1 - More than 2,500 internship hours were completed by 24 teen members
- 2 - Our L.I.F.E. Mentoring Program supported 62 one-on-one mentoring relationships
- 3 - We sent one teen member to study in Germany for the 2016-17 school year
- 4 - 22 young women completed the GirlPower Program, 4 of whom entered college
- 5 - More than 100 individual members received tutoring services, totaling more than 3,000 hours
- 6 - 13 young men completed the Journey Program
- 7 - 32 members celebrated completion of the 10-month GirlPower and Journey Programs with a camping trip to Pyramid Lake
- 8 - We launched MAP to the Future, a transitional class for 8th graders to develop academic and social skills before entering high school
- 9 - We hosted more than a dozen college tours statewide
- 10 - The APCH Shaheen Scholarship graduated 7 scholars and sent 82 to college, totaling 89 scholars served for the year – a record
- 11 - The APCH Shaheen Scholarship welcomed 31 members into the program, the highest number of freshman in our history, bringing our overall total to 335!
- 12 - Summer 2016 was filled with STEAM (Science, Technology, Engineering, Art, and Math) as we built boats, robots, roller coasters and even did some coding
- 13 - 100% (32) of our high school seniors graduated, 31 of whom entered college in the fall on an APCH Shaheen Scholarship
- 14 - 23 (72%) of our 32 high school graduates are attending 4-year universities
- 15 - We launched a new Vocational and Career Pathway program
- 16 - We opened The Bridge, our new Teen & Performing Arts Center!

APCH SHAHEEN SCHOLARSHIP PROGRAM CONTINUES TO CLIMB

In 2016 the APCH Shaheen Scholarship celebrated its 13th year by graduating 7 scholars from college and welcoming 31 freshmen, allowing us to send a total of 84 scholars to colleges across the country this fall (2016)! Hooray!

Together, our newest scholars received admission offers from more than 40 institutions, including Franklin & Marshall College, University of Illinois at Chicago, Boston University, six University of California campuses, and over 16 Cal State campuses!



IT'S NOT THE DESTINATION... IT'S THE JOURNEY

Journey is a rites of passage program for our 14-18-year-old boys that allows them to build brotherhood and true, lasting relationships with each other. All year long, workshops, guest speakers, community service opportunities and field trips support the boys as they transition to become strong, generous, goal oriented young men. Journey instills values and prepares young men to make productive lives for themselves and inspire others to do the same.

Now in its 5th year, Journey has strongly impacted more than 100 young men, teaching life skills and supporting academic rigor and personal growth. One of our Journey boys suffered a tragic family loss last year, but his Journey brothers helped him work through his anger and de-

pression to get back on a path to health and happiness and he, in turn, became a leader and exemplar for the rest of the guys on how to overcome big challenges in life.

2016 marked the second year the young men of Journey participated during our annual GirlPower Luncheon, this time collaborating with the young women to create a powerful spoken word performance illustrating the mutual respect our young people have developed for each other through the companion programs.

We are proud of our Journeymen. Their strength and their gentleness are redefining what it means to be a man in a world that has little use any more for limiting stereotypes.



APCH has served more than 18,000 young people since we opened our doors in 1993.
More than 350 members cross our threshold each day, and we have 84 APCH Shaheen scholars in college.





GRAD NEWS



Faustino Ajanel

Faustino Ajanel graduated from Bowdoin College with a B.A. in Mathematics and Education, and is starting his Master of Education at the University of Massachusetts, Boston.

Rudy Cisneros, who received a B.A. in Music Performance from UC Davis, is working on his M.A. in Music Education at the University of the Pacific Conservatory of Music.

Brenda Carillo and **Sarai Gonzalez**, both alumnae of Cal State LA, will be earning their teaching credentials there this fall.

But wait, there's more!

Over the summer, **Edwin Lopez**, a computer science major at UC Irvine, returned to APCH to teach a robotics



Brenda Carillo

and coding class, mentoring teen members along the way.

In June, **Heidi Ramos**, a freshman Women and Gender Studies freshman at San Francisco State University, delivered a moving speech at Toyota Headquarters. At SFSU, she'll be greeted by APCH Shaheen Scholar **Priscilla Romero**, an international relations major, who spent the summer interning for JusticeCorps and studying foreign policy in Korea at Chung Ang University!

Congratulations to all of our APCH Shaheen Scholars – and love and thanks to all our donors, especially The David and Linda Shaheen Foundation!

GOOD MEN NEEDED FOR OUR L.I.F.E. MENTORING PROGRAM! THAT MEANS YOU!

So many studies and stories remind us that when a young person has a mentor in their life on a regular basis, all things become possible. That's why we expect the caring adults who are mentors in our LIFE Mentoring program to commit for a minimum of two outings each month for a full year. And, does it ever pay off!

APCH teens in our LIFE Mentoring program exhibit accelerated growth in behavioral and social skills, academics and emotional well-being. Over the past three years, we have had great success with matching our female members (thanks to dozens of strong, generous women!), but a lot of our boys have had to wait for months due to a shortage of male mentors. This year, we were able to make just three male matches – we need to do more!

One of our mentees had no direction for his life. He often masked his fears with jokes and avoided conversations regarding his future. But then he met his mentor, a gentle giant with a heart of gold, a little toughness, and an absolute commitment to help our young fellow develop his aspirations into realities. In just a few weeks' time we saw a remarkable change in our teen – he became motivated and excited about his future and he allowed his confidence and winning personality to shine. He enrolled in college and he's working toward his goal of leading and making a difference in his community.

Think back to the adults that came through for you. Are you ready to pay it forward? Don't wait – this will change your life, too! To learn more, email us at LIFEmentoring@apch.org.

SISTERHOOD LEADS TO WOMANHOOD



2,000+ volunteers
contribute more than
25,000 hours
each year. **Thank You!**

APCH's GirlPower (GP) program creates a sisterhood – a safe space where girls ages 14 to 18 grow together and learn to love themselves and trust each other. Through group activities, field trips, guest speakers and community service, GP provides amazing opportunities for teen girls to mature into self aware young adults making positive life choices.

In 2016 the GP Girls learned about beautiful body image, the importance of friendships and healthy relationships, goal setting, and time management. They provided themed dinners at a local shelter for single moms, giving more than 180 community service hours. The GP girls also engaged with powerful female professionals who are

leaders in their fields. This year at their annual GirlPower Luncheon they debuted the GirlPower Choice Award, to be bestowed each year on a woman they meet and are impacted by during the year-long program.

GirlPower provides the opportunity for girls to grow, develop strengths, and use their voices as they transform into adult women who will be capable leaders and change-makers in their community. We were proud to have two of our GP girls participate in a competitive leadership program this year, and one embarked on a year-long study abroad program in Germany. And, four of our girls were awarded APCH Shaheen Scholarships and began college in the Fall!



6TH ANNUAL STAKEHOLDERS CIRCLE



All our stakeholders' voices are important to strengthening our work for the youth and families of South Central. Last May we held our 6th Annual Stakeholders Circle, a gathering for APCH members, staff, parents, interns, volunteers and directors from our Board and Leadership Council to come together and SHARE ideas about APCH, LISTEN to each other's voices, and CO-VISION about the possibilities ahead.

We reviewed developments since

the previous meeting, and the group's focus turned to Community Service and a desire for the APCH community to reach out to make more of a difference in the neighborhood through parent and student-led events. We talked about the new opportunities when our Annex opened, including having a larger stakeholders circle. Input and suggestions were conveyed to our Board of Directors at its annual retreat in June.

CINDERELLA AND PRINCE CHARMING PROJECT

After 14 years straight of equipping juniors and seniors for their proms and graduations, this annual spring event is hot, on the rise and an exciting experience to be part of. APCH will host its 15th annual CPCP in April 2017 and we are looking to making it an epic event of ROYAL proportions. Every year we serve more than 1,000 teens, engaging and

empowering them with much more than gowns and tuxes. Our two days of inspirational speakers and workshops give the youth ideas, encouragement and opportunities to think beyond high school to the life path ahead. Learn how you can become an official sponsor for this life-changing event! Contact us at Cinderellaproject@apch.org.



VOLUNTEERING AT APCH IS THE BOMB!

Hello APCH Community, I am very excited to be leading the charge for volunteerism at APCH. I am passionate about community service and it is gratifying to meet so many people who want to make a meaningful contribution to our work. I am here to serve you and share a menu of fun, impactful volunteer activities that will propel APCH's members and families

into a better quality of life. Whether you are looking to support as an individual or get your family, friends or co-workers involved, we have enough to do for everyone.

— **Sharon Lim**, APCH Volunteer Coordinator. Please email me at volunteer@apch.org and I will get back to you!

FROM THE COMMUNITY CORNER AND AROUND THE BLOCK

This year APCH was blessed with abundant support for all of our community events and we were thrilled to Pay It Forward! In addition to our regular daily programs, our events served more than 10,000 community members, including some of the 700 families on our waiting list. APCH collaborates with dozens of community partners to distribute food, clothing and other household essentials, and we assist with bridging gaps between the community and the LAPD, we partner with churches and other organizations through our community garden programs, and we work with the City to bring more awareness and services to the neighborhood. In

January 2016 APCH helped launch the new Central Avenue Historic District Business Improvement District, to work on honoring the history in the neighborhood and improving the quality of life for all residents and visitors.

APCH so much more than just a charity, it is a partnership for positive change, and you can be a part of it. Join us - learn how you can help make a difference by sponsoring an event, collecting toys, cleaning up the neighborhood, providing services and materials, adopting a family in need, or building a garden. Team work, makes the dream work!

APCH FAMILY CONTINUES TO EXPAND

Membership at A Place Called Home is thriving! With a constant enrollment of more than 600 and a waiting list of more than 750, our members are the heart of APCH and we love getting to see them grow up. So many young people who entered our doors as eight-year olds, curious, wide eyed, and barely able to reach the scanner at the door, now walk our halls with confidence, take the lead in activities and greet the next generation. And, with a 93% member retention rate, they are staying for years and we are serving whole families as they grow.

APCH Parents are a constant

source of energy, contributing to the spirit of everything at APCH. Their desire to learn has manifested in our parent nutrition classes, financial literacy workshops and an annual parent education summit with all kinds of classes designed to strengthen their connections to their children. Equally constant is their spirit of service and partnership; volunteering on campus and for our events, and this past summer a group of hardworking moms supported the kitchen in serving hundreds of meals each day, which was a huge help in getting us across the finish line!

We love our members!

2015 GALA FOR THE CHILDREN RAISES MORE THAN \$1,500,000!



Congratulations and deepest respect to our 2015 Gala for the Children honorees Josh Goldstone and Kenneth M. Karmin. Through your efforts, our amazing Board of Directors, and more than 900 attendees, the Gala was our grandest fundraising event ever! What a brilliant show of support for our FREE programs for thousands of young people at APCH. The APCH Dance Company and band, 29Live, showcased their talents throughout the evening, and several members shared their moving stories of inspiration and personal transformation at APCH. We are so very grateful.

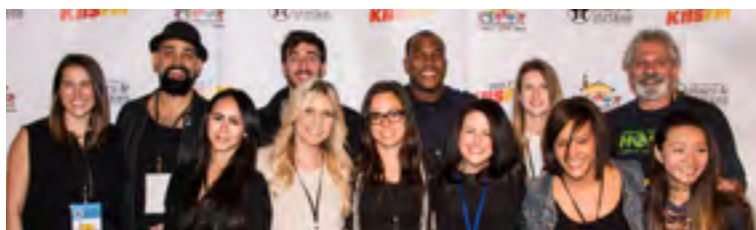


SAVE THE DATE: November 17, 2016
at the Beverly Hilton Hotel
2016 GALA FOR THE CHILDREN
HONORING JULIE PILAT AND LAURA A. WASSER

2016 STARS AND STRIKES



Our 10th annual Stars & Strikes Celebrity Bowling and Poker Fundraiser was the most highly attended ever! Our members rubbed shoulders with music sensation Miguel, actress Laura Marano, Serena Laurel, Justin Tinucci, Jason Drucker, Andrea Navedo, pop artists Catie Waters and Koda Corvette, Shawn Hook and many more who made for a fun-packed evening of bowling and poker (for the adults) – our bowling tournament was a huge success, with more than 10 “teams” playing for prizes. Thanks to the tireless dedication of our amazing Leadership Council*, we raised \$110,000 for APCH's FREE youth programs.



*The APCH Leadership Council is a group of young professionals dedicated to volunteering, raising funds, and mentoring at A Place Called Home. They are especially supportive of our programs for teens and our annual A Place Called Home for the Holidays festival. Want to get involved? Email info@apch.org and write LEADERSHIP COUNCIL in the subject line.

SAVE THE DATE: The next STARS & STRIKES
will be on March 9, 2017!



Thanks to YOU, dear donors,
all services at APCH are **FREE**
for our members and their families!

2016 GIRLPOWER AWARDS LUNCHEON



Celebrating women who inspire us, Thursday, May 19, 2016 was a beautiful day to honor three women who are role models in both their personal and professional lives: Terry Curtin, Head of Theatrical Publicity at DreamWorks Animation, Debra Martin Chase, CEO & President of Martin Chase Productions, and Lindsey P. Horvath, Former Mayor and current Councilmember of West Hollywood. Alongside them, APCH celebrated a special group of inner-city teens who are learning and growing into strong young women who will make a difference in the world. Hosted by “Access Hollywood” sensation, Liz Hernandez, the APCH Band 29Live and the APCH Dance Company entertained our guests while we raised funds for the GirlPower Project and other APCH programs. We are honored by those who joined us and welcome everyone to join us next year!

SAVE THE DATE: Check our website for info about
the next GirlPower Awards Luncheon in May 2017!



WE LOVE OUR DONORS (9/1/15 - 9/30/16)

Our deepest appreciation goes out to the dedicated individuals on the Board of Directors of A Place Called Home, who TOGETHER give and raise more than a million dollars each year.

Barbara Arnold Doug Atchison Sue Brucker Dawn Campbell	Sister Patricia Connor, RSHM Allison Copes Barbara Glazer	Stephanie Goldstine Cyrus Hadidi Louise Hamagami	Melissa Palazzo-Hart Robert Israel Robyn M. Mattison	Alan Melina Julie Pilat Amanda Plisner	Walter Richardson Gareth Schweitzer Howard Sherwood	Stephanie Sherwood David Taubin Hamed Tavajohi	Sandy Walia Marshall Wall Marilyn Zarakas
Big Thinkers \$250,000 to \$499,999 California Community Foundation The David and Linda Shaheen Foundation Community Builders Platinum \$100,000 to \$249,999 The Ahmanson Foundation Marion Brucker The ELMA Music Foundation NBCUniversal Foundation The Ralph M. Parsons Foundation The Skylight Foundation Faith Strong W.M. Keck Foundation Community Builders Gold \$50,000 to \$99,999 The Audrey Imas Foundation for Social Justice Lili and Jon Bosse Cyrus and Michelle Hadidi Herbalife J.B. & Emily Van Nuys Charities Beth and Kenneth Karmin Legendary Pictures, LLC Nancy and Bruce Newberg Ortho Mattress, Inc. The Rose Hills Foundation S. Mark Taper Foundation Sacks Family Foundation The Sharon D. Lund Foundation Howard and Stephanie Sherwood Community Builders Silver \$25,000 to \$49,999 BCM Foundation California Wellness Foundation The Crown Robinson Family The Davidow Charitable Fund Dwight Stuart Youth Fund Group Gail and Robert Israel Craig Johnson Kenneth T. and Eileen L. Norris Foundation Louis L. Borick Foundation Mercy Lab NBCUniversal Religious of the Sacred Heart of Mary Provincial Center Western American Province Dale and Kathleen Rosenbloom Roth Family Foundation Joseph Sherwood Thomas and Dorothy Leavey Foundation Steve Tisch Toyota Financial Services Wells Fargo Foundation Jan and Steve Winston Capacity Builders \$10,000 to \$24,999 The Ant Farm Judd Apatow AV Squad, Inc. Bank of America Charitable Foundation Bank of the West Big Picture Entertainment Blumhouse Productions BOND Sue and Barry Brucker Capital One Services, LLC The CarMax Foundation Carrie Estelle Doheny Foundation Chideo Ned Colletti Matthew Cooper Create Advertising Group, LLC Terry Curtin DAUM Pamela Dawber Densmore Family Fund Disney Worldwide Services, Inc. Dr. Dre DreamWorks Animation The Ella Fitzgerald Charitable Foundation ESPN Find Your Light Foundation Richard and Shan Foss Peter Giluly Jonathan and Nancy Glaser Jay Goldman Stephanie and Josh Goldstine Good Work(s) Make a Difference Goodwin Family Memorial Trust Hollywood Charity Horse Show ICM Partners ID Group Illumination Entertainment Imagine Entertainment Mari and Michael Johnson Jolson Family Foundation Kaiser Foundation Hospitals Anne Kaplan Charles Kaplan	Michael Kaplan David Keller Kelton Global Lon V. Smith Foundation The Los Angeles County Board of Supervisors through the Los Angeles County Arts Commission Los Angeles Dodgers The Los Angeles Galaxy Foundation Main Street Advisors, Inc. Marc Ptak Productions MarketCast LLC Michael De Luca Productions Midnight Oil Creative/LA Graphico Lori Miller Motive Creative Picture Head LLC Julie Pilat Marc Rapaport Richard J. Riordan Fund The Ryan and Genevieve Tedder Foundation Sageview Capital Judy and Mel Selzer Marc Shmuger and Louise Hamagami Sidney Stern Memorial Trust Signature Estate & Investment Advisors Lynne Silbert Sony Pictures Entertainment Inc. Scott Stuber Dawn and Mitch Taubin Terry Hines and Associates Time Warner Cable Kevin Traenkle Trailer Park, Inc. U.S. Bank Foundation Laura A. Wasser Marshall and Kathy Wax Wells Fargo Wild Card Jeff Wilson Working Title Films Workshop Creative, LLC Michael Ziering Dedicated Supporters \$5,000 to \$9,999 Kristen and Josh Appelbaum Beacon Pictures Austin Beutner BLT Communications Brotman Foundation of California Lisa Brucker James and Elizabeth Burgess Buzzfeed Dawn Campbell CBS Studios, Inc. Chadwick School Inell and Henry Chase Chisick Family Foundation Cinemark Community Partners Concept Arts Studios Inc. Credit Suisse Americas Foundation Richard and Alison Crowell EDO Escape Artists FedEx Ground Ben Fielder Foley & Lardner LLP Bank of America Charitable Foundation Bank of the West Big Picture Entertainment Blumhouse Productions BOND Sue and Barry Brucker Capital One Services, LLC The CarMax Foundation Carrie Estelle Doheny Foundation Chideo Ned Colletti Matthew Cooper Create Advertising Group, LLC Terry Curtin DAUM Pamela Dawber Densmore Family Fund Disney Worldwide Services, Inc. Dr. Dre DreamWorks Animation The Ella Fitzgerald Charitable Foundation ESPN Find Your Light Foundation Richard and Shan Foss Peter Giluly Jonathan and Nancy Glaser Jay Goldman Stephanie and Josh Goldstine Good Work(s) Make a Difference Goodwin Family Memorial Trust Hollywood Charity Horse Show ICM Partners ID Group Illumination Entertainment Imagine Entertainment Mari and Michael Johnson Jolson Family Foundation Kaiser Foundation Hospitals Anne Kaplan Charles Kaplan	Ondisplay Creative Open Road Entertainment Opus Community Foundation Jonathan Orszag Our Alchemy, LLC Terry Press and Andrew Marx The Reef The Refinery Scott Rudin Ruth/Allen Ziegler Foundation Gareth Schweizer Serta Mattress Company Simmons Bedding Company Marcia Simonson Social Venture Partners Charlene Sperber Nancy Stark and Stanley Iezman Tempur Sealy The TJX Foundation, Inc. Todd R. Wagner Foundation United Talent Agency, LLC University of Southern California Verites Warner Bros. Entertainment, Inc. Whistling Bird Music WME Jonathan Zeichner and Monica Chinlund True Believers \$2,500 to \$4,999 A20th Century Fox Stephanie Allen Allied Integrated Marketing Arbonne Charitable Foundation Barbara Arnold Atlas Entertainment Jackie and Howard Banchik Bank of America Robert and Nancy Bergmann Todd Black Cheryl Blodgett CAA Dwight Caines California United Bank Carl E. Wynn Foundation Nicholas Carpow The Charitable Foundation City of Los Angeles - City Attorney Beacon Pictures D'Addario Music Foundation Ali Din Robert and Robin Eatman Employees Community Fund of Boeing California Dean Factor Formosa Group, LLC Frieda C. Fox Family Foundation Gregory Gelfan Greg Gersack HAJB Family Foundation Jose Herrera Chris Hickok Clement and Candace Hirsch Edward Hom House of Blues Music Forward Foundation J.A. Daley III Foundation J.B. Berland Foundation John & Hilda Arnold Foundation Inc. James I. Karmin Kayne Anderson Capital Advisors Foundation KMD Productions Sujit Kundu Florence and Mike Madani Medical Staff of Methodist Hospital Nancy E. Barton Foundation National Health Foundation Greg Newirth New Heights Entertainment, LLC Jeff and Jane Nobbs Nutritional Research Foundation Carnie Patzke Jim Posen RedOne Productions, LLC Robbi and Tom Schiff Family Foundation Rotary Club of Los Angeles Mark Schissel Michael Schur Lisa Scott-Benson Thomas Sedler Seismic Productions, LLC Self-Realization Fellowship Church Squid & Squash Foundation Hamed Tavajohi Townscape Partners Rita Tuzon Adam Waldman Michael Wang Warner Music Group Services Veronica Whitthorne Whole Foods Market - DTLA Bryan Wolf Justin Woodhull E. Richard and Janet K. Yulman Steve Zap Ziffren Brittenham LLP Investors \$1,000 to \$2,499	Gemina Aboitiz Alan and Brenda Abramson Malek Akkad Sophie and Alan Alpert Ammo Creative Chris and Leann Angelich Paul Apel The Arterie Doug and Dalia Atchison Gabriel Aviles Paul Bacigalupo and Lucy McCoy Bacigalupo Bob Barth James Beaubien and Susan Welsh John Bertram Christine Birch Biscuit Filmworks Shari and Greg Black Blinding Edge Pictures, Inc. Tom and Rowena Bouquet Douglas Brandt M. Brown Rory Bruer Maya Burkenroad The Capital Group Companies Charitable Foundation Debbie Cerro Charles and Debra Chavez Chevrolet David Clark Comerica Bank Debbie Cole Cornelia J. Kyle Charitable Fund Corpus Christi School County of Los Angeles Covington Capital Management Craig Realty Group Citadel, LLC Rick Crane Leonardo Cuadrado Dakota Communications Robert Davidow DaVita - Beverly Hills Dialysis Center Ana de Castro and Albert Stroth Del Shaw Moones Tanaka Finkelstein & Lezcano Deluxe DeRogatis Family Terrence and Eva Dibble Drissi Advertising Gayle Ezralow Natalie Fair Fairview Capital Investment Management LLC Fanthropology Susan and Bob Feldman David Fenton Film Independent First Western Financial Fischer Family Foundation Adam Fishman Wayne Flick Focus Features Hillary and Russell Fogarty Greg and Mari Foster Bill Frances Francis D. & Irene D. Griffin Foundation, Inc. Rob and Nina Fresco Grace Gaerlan and Vahan Saroians Nancy Ganis Judith and Lawrence Garshofsky Jackson and Jasmine George Tracy Gold Google Matching Gifts Program Betty Graham Helen Greene Jennifer Guillelte Hansen, Jacobson, Teller, Hoberman, Newman, Warren, Richman, Rush & Kaller, LLP Gary Harouff Mary Harris Sharon Hauptman Pamela Hayden Ryan Hegenberger Barbara Henderson Karen Hermelin and Mark Borman Jonathan Hodge The Howard & Nikki Applebaum Foundation Andrea and Lee Hutter iHeartMedia Imaginary Forces The John M. Langston Bar Association of LA Bennett Johnson Seana Johnson Teresa Johnson Angelina Jolie Alyson Jones Glorya Kaufman Michelle and Alan Kaye Ketter Family Foundation The Kennedy/Marshall Company Carla Kessler Kiki Bean & BedHead Kinder Morgan Knickerbocker Bed Company John Landis	Mark Lehmann Lifetime and A&E Networks Jason Lindeman Albert Litewka Lithographic, Inc. Tanya Lopez-Brooks Clifford Lord Larry and Stephanie Lugash Myra Lurie and David Goldman Carter Mack Ari and Corina Madilian Mani Brothers, LLC Delphine Mann The Mark Gordon Company Marlborough School Susan Martin David Matalon Peter Mathes Matt Baer Films Kathleen McCarthy Marj and Ernest Meadows Alan Melina Mark E. Merritt and Lorena Barrientos Milken Family Foundation Robert Moore Marcy Morris Nahai Law Group Corey and Lisa Nathan Tim Nett NIKE Communications Inc. Nu Air Services Brenda and Budge Offer Ana Orellana Original Films Out of the Blue Entertainment Barbara and Mark Overland Melissa Palazzo-Hart Cheryl Paller Wyatt Parker Michael Pavlic Peck Voll Family Foundation Mary Patricia Pence Colette and Gerald Peterson Mai Phan Joseph Pittman Joe Pizutti Teri and Elliot Ponchick Piyush Prakash Jason Pritchett Jeremy Radisch Jeremy Railton Raminah, Fani, Nowakhtar & Rashidi Regal Cinemas Avi Renick Leana Revokko Walter Richardson Rio Forte, LLC Lisa Rizinikove Rock, Paper, Scissors Rosen Family Foundation Jerry and Arlene Rosin Alexander Ross The Roussou Family Charitable Fund Roy E. Grummer Foundation Peppi and Larry Rubin Karen and David Sachs David Sameth Sara Lee and Axel Schupf Seidman Family Foundation Seyfarth Shaw LLP David and Linda Shaheen Shapiro/Schwartz Family Fund Shelley's Fashions Richard Sherman Jeff Silverman Sara Simonson-Lang and Brady Lang David and Suzanne Singh Skechers USA Inc. Sloane, Offer, Weber & Dem, LLP Gail and Smitty Smith Stephen Smith Lawrence and Gloria Spungin David Stern Eva and Mark Stern Erwin Stoff Nicholas Stoller Fredric Strauss Sub City Lesley and Jon Summers Taking Things Personally Technicolor Melissa Theriault Thomas G. Zarakas Memorial Fund Jeff Thopp Rawson and Sarah Thurber Catherine and Edward Topham Paul and Susan Tordella Garrett Torres The Treasured Accessory Cynthia and Richard Troop U.S. Bank Matthew Velkes Vibe Creative Inc. The Vollmer Family Foundation Jorg Wallrabe Walt Disney Studios Matt Weaver Rachel Weber Ortiz Laura Welch	Juliet White Tracy Williams Jacob Winebaum Ila Wist and Neal Alagia Wonderful Giving Eileen and Curtis Wong Yahoo Inc Peg Yorkin Marie Zarakas Marilyn Alvarez Harriet Zaretsky Amanda Zehavi The Zenith Insurance Company Sponsors \$500-\$999 42 West Manuel Abascal The Afriat Consulting Group, Inc. Nadia Allaudin AltaMed Health Services Corporation Michael Alvarez Anthony Angellotti Pam Apel Joel Appelbaum Adeline Arjad Cook James Arnone Charmaine and Eddie Atherton Lauren Bahar Gina Balian Anne Barnett John and Penny Barr The Barrall Family Charitable Fund Lynn and Bob Bassler Jason Bateman Michael Bateman Bead Relief Michael Blackburn and Esther Aronson David Block Jonathan Bluman Chris Brearton Broad Green Pictures Broadway Federal Bank Gregory Brody Mike Brody Margot Galabrese Andre Caraco Chris Castellini Cerrill Associates The Classy Bag Lady Suzanne Cole Glen Collyer Combs Family Fund Sister Patricia Connor, RSHM Stephen Cook Hannah Cox Prudence Cox Shirley Gurfman Sean Daniel Dr. Laura Darke Laura M. DeFranceaux Jerry DeZern The Dickinson Fund Danielle Diggs Anne and Patrick Dowling Kevin Ehrhart Steve Elzer Destiny Eposito Catherine and Michael Fede Greg Ferland Casey Fleck Natalie Fousekis Mark Solomon Fredelina Garcia Gilad Gelfond Gibson International Charitable Fund Kelly Gilmore Brian Glennon Lori Goldklang Furie Jeff and Wendy Goldstein Roberto Gonzalez Jackson Gray Jeffrey Greenberg Ari Greenburg Michael Greenfield Amy Gruberg Roger Halfhide Sunshine Hanson Alison Harma Clive and Carol Hoffman Holy Trinity School James Horowitz Mona and Douglas Horton International Co-Ed Pick-up Soccer Amanda Jaffa Diana James Robin Jameson Pamela and Philip Jobe Christopher Kahle Milly and Robert Kayyem Douglas Kendle Taylor Kiland and Robert Hatcher Harald Kloser Michelle Kouyate Elaine Kramer Sandra Krause Gary Krausz Celeste L'Esperance Brenda Lacy-Davis Ryan Lake	Gloria Lamont Brady Lang Norman Lapin Kent Ledbetter Sharon Lee Bob Levitt Francis Lewis Katie and Richard Lewis Lewis Greenwood Foundation Joseph Magazzini The Management Group Sanford Mann Diana Mannheim Rexmull and Doris Manyeto Maxus Media Temple Martha and Jeffrey Melvoin Harold Meyers Claudia Mielnik Meg Minter Michael Moore, M.D. Michael Moore Richard and Rita Morton Michael Moses Andrea Navedo and Richard Pietroniro Patrick Nicolini Janet Noah Victoria Noufarchan David O'Connor Pasadena Educational Foundation - Muir Ranch Payden & Rygel Mara Pekurovskaya Rodd Perry Matthew Poage Darcy and Jeff Pollack Brittney Portlock Jeff Probst The Purcell Family Charitable Fund Brian and Kerith Putnam Kimberly Radd Rafael Ramirez Billy and Stacy Ray Pam Rector Ken and Carrie Richman Susan Rickner and William Zarakas RJ Hurton Charitable Trust The Robert Group Domenico Rocco Jessica Royer Dave Rupert Josh Russak Danielle Sanders Beth Sauer Russ Sauer Elizabeth Sayre Randall Schaeich Daniel Schechter David Schindler Larry Schnaid Christine Schweiger Jennifer and Colin Shepherd Madeleine Sherak Shlomo Y. Reznicht and Tamar Reznicht Charity Foundation The Sidney Fleck Charitable Foundation Inc Nancy Sinatra Charles and Carol Smith Jeanine Smith Stacey Snider Mark Solomon Dede Sonaram Hugo and Elena Sonnenschein St. Stephen Catholic Student Center Lucinda Starrett Jessica Stebbins Bina Allison and Zach Studin Geoff Sults Pamela Sullivan Joe Tamasatis John Thompson Toyota Motor Sales, U.S.A., Inc. Truman & Elliott LLP US Trust Maggie Venneri Bill Vuytsteke Barton Wall Catherine Wall The Walt Disney Company Foundation Mark Wapnick Pansy Washington Robert Wasson Bunny Wasser and Howard Bernstein Steve and Lonna Weber Joey Wees Richard Weintraub Wells Fargo Home Mortgage James White Angela Wiggins Christian Williams Emily Williams Brett Winn Julie Wissink Hana Wittenberg Tania Wood Caitlin Wootton Robert Wyman	Dominic Young Graham and Constance Yost Bonnie Zane Andrea Zuckerman Forward Thinkers \$250 to \$499 2 Friends Entertainment Marc Abraham Corey Ackerman Actor Training In LA Susan Afriat Amazon Smile Foundation Amgen Foundation, Inc. Alonso Angel Maria Antonicelli Matt Apice Amy Atchison Michael and Carol Atchison Meredith Averill Amy Baer Susan Baer Carol Bahoric Brian Banks Anne and Bill Barnett Jorrel Bates Chad Bates Beau Bauman Kimberly and Eric Belcher Nickole Bell Don and Carolyn Berger David and Roberta Berrent Amrita Bindra Merrick Bobb Marie Borofsky Brandy Eve Allen Photography Brett and Cherie Doherty Peter Brown Rick and Adele Burke James and Deborah Burrows Laura Carrillo Chris Cecotti Cindy Champnella Joanne Chan Richard Charkham City National Bank Coalition for Responsible Community Development Joanne and Jim Cohen Community Coalition for Substance Abuse Prevention and Treatment Paul Condolara Healy Connors Dorothy Constance Allison Copes Al Crawford Gary Credle Christopher Culin Narsai David Brian Deputy Corinne Diaz Dan DiGiallonardo Jennifer Ditchik Trish Dixon Juan Dominguez Dennis and Madeleine Durkin Michael Earmhardt Elizabeth Edwards Nancy Edwards Harriet Elber Valerie Emberg Cherie Eisenberg Empire Diamond Co. Natalie Eshaya Eliza Ewing-Jones Trent C. Evans Alexa Faigen Jerold and Barbara Federman Eugene Fillius Kathleen Flynn John Frankenheimer Lissa Freed Susie Friedland Susan Friedman Tim Friedman Charles Furst Danilo Garcia Jennifer Gilbert Kam Gladich Andrew Goodard Gordon Goldsmith-Wein and Jon Wein Good News Foundation Whitney Goodman Jay Gordon Nordin Grancell Alexandra Grane Warren and Randi Grant Alissa Grayson Dana Green Robin Greer Laurie Groh Raymond Grundeman Carolyn Hariston Christine Hassler Jim Henesy Amira Herdich Bill Horvath Lindsey Horvath Lucialia Ibarra Rosaling Jewett

Have you included APCH in your Estate Plan?



JGerard Design Studio	Charisse Anderson	Joan Harker	Janet Murillo	Ron and Martha Wakasa	Donna and Vincent Croce	Tim Kim	Rowena Rosenberg
Anthony Johnson	Joe Anderson	Katherine Harrick	Thomas Murphy	Carol Walters	Sandi Cromer	Alex Kirk	Bruce and Jackie Rosenblum
Daniel Kane	Amelia Anka	Robert G. Harper and Joan B. Harper	William Murphy	Mysesha Ward	Perry Cude	Lindsay Kirschner	Gwendolyn Ross
Michael Katleman	Rebecca Arzoian	Charyn Harris	Kimberly Myers	Joye Wees	Ellen Cunningham	Sherry Kobashigawa	Andrea Roth-Fedida
Jeremy Katz	Alexa Bagnell	Harumi Hata	Phyllis and Ronnie Nathan	Sanford and Karen Weiner	Jasmine Daghighian	Paul Kostin	Robin and Jeffrey Rothstein
Stephanie and Melvin Kay	Shauna Bain Smith	Daniel Haug	Doug Neil	Rachel Weintraub	Larry Dahl	John W. Krafft	Audrey Rowland
Steven and Gabriela Kirchner	Ivette Barajas	Sharon Hearn	Nicholas Nesbitt	Daniel Weiss and Abby Wolf	Efithia Danellis	Melissa Kriebel	Maribel Ruiz
Vince Klaseus	Karoline Barker	Alex Hedlund	Linda Nicoll	Kanoe Wheeler	Rosie Davila	Kroger	Barbara Sabo
Maria Kleshcheva	Thomas Beatty	Mark Heisten	Claire Noble	Lee White	Alexandra Davis	Tiffany LaBarbera-Palmer	Eladio Sainz
Judy Kravitz	Victor Bedolla	Joe Hendrickson	Brian Williams	Lauren Deck	Greg Derin	Carol Lam	Adam Salky
Alan Lerner	Bel Air Investment Advisors, LLC	Liana Hernandez and Khalid Alwan	Elizabeth Ondaatje	Jason Williams	Young Lam	E. L. Lau	Ida Sanchez
Jay Levey	Jeff Benjenk	Darrel Hieber	Randy and Cris Opperman	Michael Williams	Pamela Dery	Alice Lemon	Thruv Sarup
Andrew Lin	Ty Benti	Charles B. Hill	Andrea Ordin	Willis Allen Real Estate	Andrew DeYoung	Barbara Leake	Amy Saruwatari
Randy Linder	Simone Benycar	Hilton & Hyland	Gerard Orozco	Raine Wilson	Jeffrey Dobrinsky	Audrie Lee	Brandon Sawyer
Mark and Janet Lohman	Berklee College of Music	Stephen Hinden	Richard Ortega	Sabrina Wind	Sean Dobson	Carole Leff	Gregg and Amy Scaglione
Louisa Lombard and Roman Culjat	Karen Bernstein	Lauren and David Hines	B. David and Roberta Owen	Patti Winkel	Ken Doekal	Kelley Lehr	Vanessa Schlosser
Michael Lombardo	Toby Bernstein	Michael and Katie Hines	Nicholas Parker	Jessica Winther	Barrett Sheley Donner	Alice Lemmon	Fred Schoen
Los Angeles Neighborhood Land Trust	CV. Berridge	Jake Hjortland	Sonny and Monica Parmar	Andre Wiseman	Claire Doyle	Mary Lennon	Suzanne Scholz
Katrina Love	Sarah Beyersdorf	Susan Hoffman Hyman	Dale Pattugall	Noah Writlin	Karesia Dunbar-Jones	Lynn Levine	Elizabeth Schwartz
M And R Vest Foundation	Natarajan Bhaskar	Gene Hong	Michele Perelman	Amanda Wong	Bertha Durazo	Teri Levine	Leah and Norm Schweitzer
Virginia Maas	Charles Black	Andrew Hotz	Stephen and Gordana Perloff	Hayley Wood	Karen Earls	Amanda Lewis	Helen Serrano
Doug MacLaren	Jim Blechman	Julie Hovsepian	Aliya Perry	John Yanez	Ann Edelman	Karen Lieberman	Betty Sewell
Chuey Martinez	Lisa Blond	Margaret Howe	Amanda Plisner	Ronald Yi	Olivia Edery	Nancy Lightner	Daniel Shapiro
Jorna Marual	Andrea Bocka	Collette Huemer	Douglas Post	Cendy Younan	Rebecca Ann Einsig Trustees	Joseph Emde	Bonnie Sawyer
Beverly Mason	Christine Borgman and George Mood	Margarita Borshukova	Ameeta Pradhan	Cameron Young	Weldon Epp	Arlene Epstein	Shanen Silverman
Giovanni Mejia	Rebecca Bostic	Rebecca Bostic	Jennifer Prince	Ben Younger	Barbara Lincoln	Scott Epstein	Matthew Silverstein
Cara Miller	Vivian Bowers	Patricia Ibarra-Flores	Jody Pritchard	Damon Puckett	Andrea Lovano	Harvey and Rozanne Lowe	David Simon
Laura Mills	David Boyle	Christina Irvin	Gilbert Radillo	Margaret Yuki	Amir Erez	Meghan Luff	Nicole Sing
Jeffrey Mirvis	Richard Brazill	Jon Izumoto	John Zaffarano	John Zaffarano	Karen Fairbank and Vahan Moosekian	Dale Lujan	Skadden, Arps, Slate, Meagher & Flom LLP
The Mission Entertainment	Harold and Adrienne Breslow	Maurina Jack	Tracy Rahn	Sheldon and Naomi Zimble	Janice Falc	Julie Lynch	Sheryl Skibbe
Luke Mitchell	Alex Brod	Janine Jagodowicz	Ralph's Community Contribution Program	Jim and Maddy Zimring	Tim Faranik	Jennifer MacDonald	A.V. Slater
Kevin Morris	BSB and KSB Giving Fund	Javier JJ Jauncho	Andrew Ramirez	Lorre Zuckerman, James Shapiro & Robert Shapiro	Janice Feinstein	Paul and Lauren McDougall	Mimi Slavin
Martin Mueller	Linda Burum	Cassandra Butcher	Fred Raskin	Grass Roots Up to \$99	Benjamin Fertig	Ari Macht	Alison Small
Tracy Mustin	Cassandra Butcher	Johanna Byer	Marguerite Ray	Judith Abrams	John and Christine Fitzgibbons	Sarah Mahoney	Beth Smith
Behzad Nahai	Susan Napier	Seth Byers	Sandra Raynor	Jack Adams	Food 4 Less Community Rewards Program	Ashley Maletta	Ethan Smith
Susan Napier	Jeff and Marjan Neuman	Hilary Norton	Campaign	Cynthia Agtarap	Eric Francois	Cheryl Mallin	Society for Marketing Professional Services
Merilee Oakes	Ellen Olivier	Ely Orias	Nancy Chakravarty	Janet and Lorin Aird	Kristina Maniatis	Rosalind Marmel	Judy Solomon
Nayan Padrai	Paul Hastings	PBS SoCal	Michael Chester	Mary Aldas	Arnold and Elaine Friedman	Marleni Martinez	Howard Solovei
Colleen and Christopher Pennell	Chong & Chong Entertainment, LLC	Michael Phillips	Ryan Chingcuangco	All Peoples Christian Center	Jori Friedman	Andrea Mason	Sharon Spencer
Sandra and Darrell Pilat	Louis Pitt	Cynthia Pitts	Chong & Chong Entertainment, LLC	Jose Alonso and Susanne Zabloudi	Rebecca Friendly	Daniel Mattison	Daniel Stadler
Joseph Polletti	Kim Posin	Paul Pratt	Stephen and Lynn Rappaport	Alicia and Richard Anderson	Katie Fryback	Bridget McCarthy	Jordan Stallings
Monique Proctor	Sean Dalesandro	Elizabeth and Adnan Rawjee	Elizabeth and Adnan Rawjee	Cynthia Angles	Altuedo Fuentes	Jacqueline C. McCauley	Jared Stambaugh
Angelo and Danielle Romano	David Schneiderman	Russell Schwartz	Robert Decker and Chris Scibelli	Phoebe Anthony	Kim Furzer	Heather McCutcheon	Zed Starkovich
David Schneiderman	Angelo and Danielle Romano	David Schneiderman	Robert Decker and Chris Scibelli	Elizabeth Aragon	Faith Gabriel	Lauren McCutcheon	Adela Steinman
Russell Schwartz	Angelo and Danielle Romano	David Schneiderman	Robert Decker and Chris Scibelli	Dina Araniwa	Gabrielle Family Vision Care	J. McDaniel	Scott Sternberg
Anne Marie and Chris Scibelli	Kathrin Segal	Maya Shah	Dani Shaker	Christine Ardito	Steve Gaeto	Dan McKernan	Linda Stone
Kathrin Segal	Maya Shah	Dani Shaker	Lenore Shaw	Briana Avalos	Jeffrey Gaffner	Samantha Mehra	Theodore Su
Dave Sheldon	Colette Shelton	Sierra View Care Center	Skydance Television	Lizbeth Avila	Chris Gagne	Myron Meisel	Ankit Sur
Bob Smiland	Ruth and John Souza	Maira Squier	Paul Stapleton	Alexandra Azad	Evan Gamble	Diana Merchel	Joe Swetlow
Carrie Stein	Andrew Stern	Jane Strouse	Studio LOL LLC	Cynthia Babcock	Eric Garretti and Amy Wakeland	Nasim Meybodi	Nikki Tantilaidchai
Cooke and Elaine Sunoo	Lawrence and Anne Swartwood	Daniel Tauberg	Lacey and Kendall Taubin	Amor Baeza	Edgar Garcia	Melanie Meyer	Henry Tracy
Toolay Productions	Kimm Uzielli	Trina and Adam Venit	Tony Von Perieux	Aungelique Bailey	Ina Gartenberg	Microsoft Matching Gifts Program	Kristen Taylor
Barry Ziehl	Barbara Zipperman	Seed Planters \$100 to \$249	Abbott Kinney Festival Association	Suzanne Baptiste	Steven R. Gay and Kyong Aeng Gay	David and Tami Georgeff	Michelle Gertzman
Allegro Talent Group, LLC	Fabrizio Alliaia	Sydney Alston	Charlene Ambrose	Bjarne Bare	Dorothy Gibbs	Elizabeth Gibbs	Stephen Gibbs
Alan Amman	Mia Ammer	Whole Foods Market - Sherman Oaks	Whole Foods Market - Sherman Oaks East	Elisabeth Barer	Sharon Baskin	Katalina Baumann	Amanda Beall
				Sharon Baskin	Cory Baumgarten	Mary Jo Gillis	Zena Ginsberg
				Glauz Family Foundation	Steven Glnodney	Samuel Goldberg	Juan Gonzales
				Keran Gosine	Michelle Gottwig	Preston Gould	Sarah Gould
				Garrett Green	Cody Guffey	Andrew Gumpert	Judy Guo
				Talia Boone	Thomas Guy	H&R Block Tax Services, Inc.	Sophia Haimowitz
				Deborah Bronner	Aaron Brownstein	Ashley Brucks	Samuel Brumbaugh
				Christine Buber	Dagmar Buck	Annalisa Hatfield	Chloe Hauenstein
				Patricia Buehnerkemper	Buffalo Exchange	Carol Burke	Roderic Burks
				Susan Burns	Grace Busby	Thomas Callahan	Andrew Camba
				Drew Cameron	Nathan Campos	Catholic Charities El Santo Niño	Community Center
				Challengers Boys & Girls Club	Jan and Tatum Chalmers	Jerrica Chen	Josephine Chan
				Janet Chesne	Alice Cheung	Stephen Christensen	Arlene Chubbis
				John Cluff	Courtland Cleaves	Shane Coburn	Allen Cohen
				Laurence Cohen	Stacy Cohen	Susan Cohn	Kenneth Cole
				Andrew Coles	Kerianne Connor	Gabriela Cortes	Howard Cowan
				Allison Candall	Sharon Cress	Barbara Ignash	Keith Ikemoto
				Janet Chesne	Alice Cheung	Stephen Christensen	Arlene Chubbis
				John Cluff	Courtland Cleaves	Shane Coburn	Allen Cohen
				Laurence Cohen	Stacy Cohen	Susan Cohn	Kenneth Cole
				Andrew Coles	Kerianne Connor	Gabriela Cortes	Howard Cowan
				Allison Candall	Sharon Cress	Barbara Ignash	Keith Ikemoto
				Janet Chesne	Alice Cheung	Stephen Christensen	Arlene Chubbis
				John Cluff	Courtland Cleaves	Shane Coburn	Allen Cohen
				Laurence Cohen	Stacy Cohen	Susan Cohn	Kenneth Cole
				Andrew Coles	Kerianne Connor	Gabriela Cortes	Howard Cowan
				Allison Candall	Sharon Cress	Barbara Ignash	Keith Ikemoto
				Janet Chesne	Alice Cheung	Stephen Christensen	Arlene Chubbis
				John Cluff	Courtland Cleaves	Shane Coburn	Allen Cohen
				Laurence Cohen	Stacy Cohen	Susan Cohn	Kenneth Cole
				Andrew Coles	Kerianne Connor	Gabriela Cortes	Howard Cowan
				Allison Candall	Sharon Cress	Barbara Ignash	Keith Ikemoto
				Janet Chesne	Alice Cheung	Stephen Christensen	Arlene Chubbis
				John Cluff	Courtland Cleaves	Shane Coburn	Allen Cohen
				Laurence Cohen	Stacy Cohen	Susan Cohn	Kenneth Cole
				Andrew Coles	Kerianne Connor	Gabriela Cortes	Howard Cowan
				Allison Candall	Sharon Cress	Barbara Ignash	Keith Ikemoto
				Janet Chesne	Alice Cheung	Stephen Christensen	Arlene Chubbis
				John Cluff	Courtland Cleaves	Shane Coburn	Allen Cohen
				Laurence Cohen	Stacy Cohen	Susan Cohn	Kenneth Cole
				Andrew Coles	Kerianne Connor	Gabriela Cortes	Howard Cowan
				Allison Candall	Sharon Cress	Barbara Ignash	Keith Ikemoto
				Janet Chesne	Alice Cheung	Stephen Christensen	Arlene Chubbis
				John Cluff	Courtland Cleaves	Shane Coburn	Allen Cohen
				Laurence Cohen	Stacy Cohen	Susan Cohn	Kenneth Cole
				Andrew Coles	Kerianne Connor	Gabriela Cortes	Howard Cowan
				Allison Candall	Sharon Cress	Barbara Ignash	Keith Ikemoto
				Janet Chesne	Alice Cheung	Stephen Christensen	Arlene Chubbis
				John Cluff	Courtland Cleaves	Shane Coburn	Allen Cohen
				Laurence Cohen	Stacy Cohen	Susan Cohn	Kenneth Cole
				Andrew Coles	Kerianne Connor	Gabriela Cortes	Howard Cowan
				Allison Candall	Sharon Cress	Barbara Ignash	Keith Ikemoto
				Janet Chesne	Alice Cheung	Stephen Christensen	Arlene Chubbis
				John Cluff	Courtland Cleaves	Shane Coburn	Allen Cohen
				Laurence Cohen	Stacy Cohen	Susan Cohn	Kenneth Cole
				Andrew Coles	Kerianne Connor	Gabriela Cortes	Howard Cowan
				Allison Candall	Sharon Cress	Barbara Ignash	Keith Ikemoto
				Janet Chesne	Alice Cheung	Stephen Christensen	Arlene Chubbis
				John Cluff	Courtland Cleaves	Shane Coburn	Allen Cohen
				Laurence Cohen	Stacy Cohen	Susan Cohn	Kenneth Cole
				Andrew Coles	Kerianne Connor	Gabriela Cortes	Howard Cowan
				Allison Candall	Sharon Cress	Barbara Ignash	Keith Ikemoto
				Janet Chesne	Alice Cheung	Stephen Christensen	Arlene Chubbis
				John Cluff	Courtland Cleaves	Shane Coburn	Allen Cohen
				Laurence Cohen	Stacy Cohen	Susan Cohn	Kenneth Cole
				Andrew Coles	Kerianne Connor	Gabriela Cortes	Howard Cowan
				Allison Candall	Sharon Cress	Barbara Ignash	Keith Ikemoto
				Janet Chesne	Alice Cheung	Stephen Christensen	Arlene Chubbis
				John Cluff	Courtland Cleaves	Shane Coburn	Allen Cohen
				Laurence Cohen	Stacy Cohen	Susan Cohn	Kenneth Cole
				Andrew Coles	Kerianne Connor	Gabriela Cortes	Howard Cowan
				Allison Candall	Sharon Cress	Barbara Ignash	Keith Ikemoto
				Janet Chesne	Alice Cheung	Stephen Christensen	Arlene Chubbis
				John Cluff	Courtland Cleaves	Shane Coburn	Allen Cohen
				Laurence Cohen	Stacy Cohen	Susan Cohn	Kenneth Cole
				Andrew Coles	Kerianne Connor	Gabriela Cortes	Howard Cowan
				Allison Candall	Sharon Cress	Barbara Ignash	Keith Ikemoto
				Janet Chesne	Alice Cheung	Stephen Christensen	Arlene Chubbis
				John Cluff	Courtland Cleaves	Shane Coburn	Allen Cohen
				Laurence Cohen	Stacy Cohen	Susan Cohn	Kenneth Cole
				Andrew Coles	Kerianne Connor	Gabriela Cortes	Howard Cowan
				Allison Candall	Sharon Cress	Barbara Ignash	Keith Ikemoto
				Janet Chesne	Alice Cheung	Stephen Christensen	Arlene Chubbis
				John Cluff	Courtland Cleaves	Shane Coburn	Allen Cohen
				Laurence Cohen	Stacy Cohen	Susan Cohn	Kenneth Cole
				Andrew Coles	Kerianne Connor	Gabriela Cortes	Howard Cowan
				Allison Candall	Sharon Cress	Barbara Ignash	Keith Ikemoto
				Janet Chesne	Alice Cheung	Stephen Christensen	Arlene Chubbis
				John Cluff	Courtland Cleaves	Shane Coburn	Allen Cohen
				Laurence Cohen	Stacy Cohen	Susan Cohn	Kenneth Cole
				Andrew Coles	Kerianne Connor	Gabriela Cortes	Howard Cowan
				Allison Candall	Sharon Cress	Barbara Ignash	Keith Ikemoto
				Janet Chesne	Alice Cheung	Stephen Christensen	Arlene Chubbis
				John Cluff	Courtland Cleaves	Shane Coburn	Allen Cohen
				Laurence Cohen	Stacy Cohen	Susan Cohn	Kenneth Cole
				Andrew Coles	Kerianne Connor	Gabriela Cortes	Howard Cowan
				Allison Candall	Sharon Cress	Barbara Ignash	Keith Ikemoto
				Janet Chesne	Alice Cheung	Stephen Christensen	Arlene Chubbis
				John Cluff	Courtland Cleaves	Shane Coburn	Allen Cohen
				Laurence Cohen	Stacy Cohen	Susan Cohn	Kenneth Cole
				Andrew Coles	Kerianne Connor	Gabriela Cortes	Howard Cowan
				Allison Candall	Sharon Cress	Barbara Ignash	Keith Ikemoto
				Janet Chesne	Alice Cheung	Stephen Christensen	Arlene Chubbis
				John Cluff	Courtland Cleaves	Shane Coburn	Allen Cohen
				Laurence Cohen	Stacy Cohen	Susan Cohn	Kenneth Cole
				Andrew Coles	Kerianne Connor	Gabriela Cortes	Howard Cowan
				Allison Candall	Sharon Cress	Barbara Ignash	Keith Ikemoto
				Janet Chesne	Alice Cheung	Stephen Christensen	Arlene Chubbis
				John Cluff	Courtland Cleaves	Shane Coburn	Allen Cohen
				Laurence Cohen	Stacy Cohen	Susan Cohn	Kenneth Cole
				Andrew Coles	Kerianne Connor	Gabriela Cortes	Howard Cowan
				Allison Candall	Sharon Cress	Barbara Ignash	Keith Ikemoto
				Janet Chesne	Alice Cheung	Stephen Christensen	Arlene Chubbis
				John Cluff	Courtland Cleaves	Shane Coburn	Allen Cohen
				Laurence Cohen	Stacy Cohen	Susan Cohn	Kenneth Cole
				Andrew Coles	Kerianne Connor	Gabriela Cortes	Howard Cowan
				Allison Candall	Sharon Cress	Barbara Ignash	Keith Ikemoto
				Janet Chesne	Alice Cheung	Stephen Christensen	Arlene Chubbis
				John Cluff	Courtland Cleaves	Shane Coburn	Allen Cohen
				Laurence Cohen	Stacy Cohen	Susan Cohn	Kenneth Cole
				Andrew Coles	Kerianne Connor	Gabriela Cortes	Howard Cowan
				Allison Candall	Sharon Cress	Barbara Ignash	Keith Ikemoto
				Janet Chesne	Alice Cheung	Stephen Christensen	Arlene Chubbis
				John Cluff	Courtland Cleaves	Shane Coburn	Allen Cohen
				Laurence Cohen	Stacy Cohen	Susan Cohn	Kenneth Cole
				Andrew Coles	Kerianne Connor	Gabriela Cortes	Howard Cowan
				Allison Candall	Sharon Cress	Barbara Ignash	Keith Ikemoto
				Janet Chesne	Alice Cheung	Stephen Christensen	Arlene Chubbis
				John Cluff	Courtland Cleaves	Shane Coburn	Allen Cohen
				Laurence Cohen	Stacy Cohen	Susan Cohn	Kenneth Cole
				Andrew Coles	Kerianne Connor	Gabriela Cortes	Howard Cowan
				Allison Candall	Sharon Cress	Barbara Ignash	Keith Ikemoto
				Janet Chesne	Alice Cheung	Stephen Christensen	Arlene Chubbis
				John Cluff	Courtland Cleaves	Shane Coburn	Allen Cohen
				Laurence Cohen	Stacy Cohen	Susan Cohn	Kenneth Cole
				Andrew Coles	Kerianne Connor	Gabriela Cortes	Howard Cowan
				Allison Candall	Sharon Cress	Barbara Ignash	Keith Ikemoto
				Janet Chesne	Alice Cheung	Stephen Christensen	Arlene Chubbis
				John Cluff	Courtland Cleaves	Shane Coburn	Allen Cohen
				Laurence Cohen	Stacy Cohen	Susan Cohn	Kenneth Cole
				Andrew Coles	Kerianne Connor	Gabriela Cortes	Howard Cowan
				Allison Candall	Sharon Cress	Barbara Ignash	Keith Ikemoto
				Janet Chesne	Alice Cheung	Stephen Christensen	Arlene Chubbis
				John Cluff	Courtland Cleaves	Shane Coburn	Allen Cohen
				Laurence			



WE LOVE OUR DONORS (9/1/15 - 9/30/16)

Thanks to our In-Kind Donors of food, clothing, toys, bicycles, household items, program supplies and services.

Mountain Mover

Los Angeles Unified School District

Rainmaker

Ayuda, Inc.
Food Forward
Friar Tux
HOK
Ross Stores
Earth Builder
Berklee College of Music
Chipotle Mexican Grill
Classic Tile & Mosaic
Corporation for National and Community Service
Disney Worldwide Services, Inc.
Kara Harshbarger
Herbalife
InterScope Records
Craig Johnson
The Los Angeles Galaxy Foundation
Los Angeles Wilderness Training
Starbucks Foundation
Cheryl Wright and Tom Lieber

Provider

America's Tire
Bank of America
Bank of the West
Beats By Dre + Apple
City National Bank
Heidi Duckler Dance Theatre
Holland & Knight
Hot Topic Foundation
International Playthings LLC
Gail and Robert Israel
KIK Corporation
Latham & Watkins
Los Angeles Dodgers
Ari and Corina Madilian
Marymount High School
MattMan Surf Kids Foundation
Sheldon McCorn
Overbrook Entertainment
Mark Sandelson
Colette Shelton
Marc Shmuger and Louise Hamagami
Skid Row Housing Trust
South Bay Workforce Investment Board
St. John's Mobile Clinic
Staples Center Foundation
Today Show Charitable Foundation, Inc.
Treasure Little Children
UCLA LEAP Program
Universal Pictures
Westwood College
Whole Foods Market

Harvester

Melissa Palazzo-Hart
Warner Bros. Entertainment
The Peninsula Beverly Hills Hotel
Laura A. Wasser
Kelton Global
NBCUniversal
Vision to Learn
Boeing Company
Emily Hopton
Evite
R. Carlton Proctor, Jr.
Clothes The Deal
Goodyear Airship Operations
Archdiocese Youth Employment
Service
The Ella Fitzgerald Charitable Foundation
Los Angeles Sparks
Work Links
Good Specs Inc.
Hyland's Inc.
Sibling Rivalry
Maria Aguilar
S. Giselle Ugarte
The Shoe Crew
Rotary Club of Los Angeles
Dilip Parekh
Horses in the Hood
Mount Saint Mary's University
Richard Katzman
Perspectiva, Inc.
Shout! Factory
The Art Farm
Wescom Credit Union
BSN Sports
Dana Feldstein
Darnell Watson
Richard and Shari Foos
Archer School for Girls
Marshall and Kathy Wax
Lisa Aldridge
The TJX Companies, Inc.
Lisa and Johnny Lopez
Bruce Newberg
City Global
Daniel's Jewelers
Kruz Strings
Big Sunday
Millennium Pension Services Inc.
Hollywood Orchard
FedEx
Tina Torres-Tsilacos
Alaska Airlines
Anthem Blue Cross Foundation
Time Warner Cable
Carrie Stein

Northgate Gonzalez Market #38

PHD Media
Signature Estate & Investment Advisors
Matt Weaver
USC Athletics
Visionaire Lighting, LLC
iPalpiti Artists International, Inc.
Vicki and Daniel Gold
KYDS Inc.
Brotherhood Crusade Youth Source Center
Claudia Robles
Tada Catering
UCLA Mobile Eye Clinic
Ben Tripp
All Peoples Community Center
Santa's Elves
Silent Knights
Jojo Monster Graphics
Mullen Lowe
Seyfarth Shaw LLP
Twist
Kolay Flooring International
Russell and Luz Koge
ADT Security Services
Maurice Rahimi
Maya Shah and Chris Cecotti
Make Music LA
1-800 Flowers.com
Marshall Smith
Capital One Services, LLC
Marisa Forest
Jasmine Art + Design
Imperial Woodpecker
HP Home & Home Office Store
Minister Lorenzo Johnson
California Contemporary Ballet
John Pilat
FTI Consulting
County of Los Angeles - Office of Mark Ridley-Thomas
AEG Live LLC - Goldenvoice
Jasmin Cortez
iHeartMedia
Dawn Campbell
Chelsea Khatami
Peter Mathes
Toyota Financial Services
Whitney Stuver
Armine Hovsepian
Mars Sandoval
Unified Grocers, Inc.
David and Linda Shaheen
ALCHEMY
Anna Drabek
Helen Greene

Jenna Nagler

Los Angeles Clippers Foundation
Cultivator
D'Addario Music Foundation
Natalie Eshaya
Ida Tally
Ryder Truck Rental and Leasing
Reed's Original Ginger Brew
DC Comics
Jade and Adam Mills
Kaiser Permanente
Danilo Garcia
SMPS - LA
JMB Capital Partners
Imperial Shade and Venetian Blind Co.
Milk and Bookies
Mansour Travel Company
Bimbo Bakeries
Howard and Stephanie Sherwood
Performance Team
CBRE
Microsoft
California Rainbow for Girls Foundation, Inc.
Avalon Hollywood
Sherry Kobashigawa
Cyrus and Michelle Hadidi
Scs Dynamics, Inc.
Amy Gruberg
Allie Berkowicz
Amelia Steely
Pacific Park
Angel Del Villar
Echo Park Film Center
George Macias
The Line Hotel
Lauren McClair
Christiane Delgado-Radillo
Christine Morrison
Drunken Pixel
The Beverly Hilton Hotel
Vanessa Mancos
Mariot Sanchez
Dawn Little
Kristi Whisler
Diana Arnold
Barbara Arnold
Northern Trust
Tarabou Betserai Kirkland
Zna Houston
Ameeta Sharma
Carrie Giordano
Adena and Bill Frank
Hollywood Charity Horse Show
Jan and Steve Winston
Sabine Waterkamp

Jessica Gann

Jonathan Lopez
Barbara Glazer
ICM Partners
Emily Davis
Lisa Solis
L.A. Sanitation
Los Angeles Youth Opportunity Movement
Girl Scout Troop 1676
Silvina Franklin
Barry's Ticket Service
DAUM
Debrah Constance
Empire Diamond Co.
Luz Rodriguez
Mary Miller
Nurturer
Anna-Lisa Alexandre
Stephanie Allen
Donald Alschuler
Amtech Elevator Services
Andy Gump
Maria Antonicelli
ARA Environmental Services
The Atom Factory
Anne Barnett
Bel Air Investment Advisors, LLC
Joel Bernal
Melanie Bernardin
Bhakti Bodyworks
Bridge Street, Inc.
Heather Bruce
Stephanie Canola
Chateau Marmont Hotel
Carol Cheng-Mayer
Deborah Ching
Kate Christensen
Conn-Selman Inc.
Continental Ice Cream Inc.
Elva Cortez
Julianne Cuellar
The Culver Hotel
Michael Dains
Cheryl Dausn
Jewel Deleall
Deloitte Consulting LLP
Nayeli Dominguez
Edendale
Electronic Arts
Maureen Enem
Donald Ennis
Facebook
Scott Finck
John Finnigan
Fitzroy & Silluzio Families
Fox Theatricals

C.J. Franklin

Beth Fraser
Frieda C. Fox Family Foundation
Gisela and Jeff Friedman
Friends of the Los Angeles River
Alejandro Gamboa
Fredelina Garcia
The Gas Company
Give A Beat
Mami Glick
Stephanie and Josh Goldstine
Green Elephant Healing
H & H Nursery
Hal's Bar & Grill
Hammer Museum
Holly Harbinger
Sharon Hauptman
Michelle Hayden
Hines
Inner City Arts
International Brotherhood of Electrical Workers Local 18
Hanna Jason
Bennett Johnson
just keep livin Foundation
Kantorlaw and Associates
Kathleen Kavanagh
Kaylie Kennerson
KPMG, LLP
Sharon Leerdam
Maxine Levine
Anastasia Lewis
Linkend Corporation
Live Nation
Los Angeles Lakers
Paul and Lauren MacDougall
Natalee Magana
Andrew Major
Marino Ristorante
Robyn Mattison
Carol Meredith
Naked Juice
Nickelodeon
NKSFB
Pacific Traffic Control Inc.
Paramount Pictures
Jeff Patterson
Pepperdine University
Picture Head LLC
Pine Crest Schools
Staci Pontius
Victor Portillo
Elizabeth Potts
Councilman Curren Price, Jr.
Gilbert Radillo
Tracy Rahn
Reiss Company

Emily Resnick

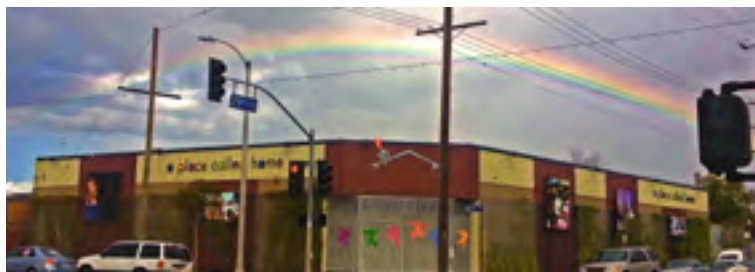
Reyes Van Conversion
Michelle Robbins
Diane Ikemiyashiro
Melissa Romc
Cynthia Rosales
Nicolette Roux
Miguel Sanchez Garcia
Tiffany Savion
Larry Schnaid
Shannon Shue
The Siegel Group
Sisterhood LA
Holly Stacking
Superstar Nutrition
Dawn and Mitch Taubin
Maureen Tepedewo
Terrene
TJX
Diane Vicknair
WE tv
West Coast University
Rich Wolper
Writers Guild of America, West
Maya Yaviv
YogaWorks Studio City
Maryellen Zarakas
Seed Planter
ABC Inc.
Aki Akinola
Baby Blues BBQ - West Hollywood
Basecamp
Jameelah Bealum
Libby Broadfoot
Margie and Denis Brumm
California United Bank
Ana Cardenas
Margarita Chavez
Mima Chigua
Christmas Angels
Adam Colbert
Daniell Menswear
Decor Art Galleries
Marcee Dela Cruz
Enterprise Communications, Inc.
Fabiola Cucina
G Photo Booth
Charles Gale
Dawn Girocco
Michael Glenn
Gilberto Gomez
Ramon Gonzalez
Olivia Gutierrez
Guido Hajenius
Charlyn Harris
Maria Hernandez
Jonathan Hodge

The Hollywood Corner

Shelly Howell
Donna Humphrey
Diane Ikemiyashiro
Intelligent Direct, Inc.
Margarita Ivanova
The J. Paul Getty Trust
Sophie Lafferty
Jessica Leon
Leonie Industries LLC
Kathy Liu
Guadalupe Macias
Cleiber Mauz
Maxwell Doug
Merrill Lynch Bank of America
Cooperation
Araceli Mora
Mercedes Morales
Natural History Museum of Los Angeles
Olga and Pedro Navaro
Merilee Oakes
Kristen Olfesen
Ana Palacios
Alia Perry
Bridget Phillips
PR NEWSWIRE ASSOCIATION, LLC
Liliana Pulido
Linda Pullman
Wendy Ramirez
Teresa Reyes
Richland Avenue Elementary School
Jerry and Arlene Rosin
Josh Ruskak
Monica Sahagun
Juan Saldana
Minerva Sanchez
Ronald Schur
SkillPath Seminars
SoCal Hoops
Yvonne Styles
Julia Sumpton
Melissa Sun
Beth Tepper
Brien Terranova
USC Joint Educational Project
USC Trojans Rugby Team
Daniel Vai
Lisa Varela
Philip Victor
Walden Surfboards
Sharon Wixen
Work For Good
Valda Wythe
Jonathan Zeichner and Monica Chindlund
Neydi Zenteno

We're sorry if we overlooked you, misspelled or incorrectly listed your name. Please let us know and we will gladly correct our records for future newsletters, info@apch.org

OH HAPPY DAY!



For more than a decade it was a dream... and now it's come true!

For years we've had short space and a long waiting list of young people and families that want to come in. On

November 10, 2016 APCH opened

The Bridge, a beautiful 10,000 square foot facility to house our Bridge to the Future (Teen) Program with its college prep and scholarship initiative, our

continuation high school partnership, GirlPower and Journey, and a Creative Space comprising a lobby/art gallery and two large classrooms that convert into a state of the art rehearsal and performance space for our Dance, Music, and Digital Media Departments, and a soon to be added Theater Department. And, we are launching our new Vocational Pathways program to prepare our young people for good jobs.

In addition to hosting all of the APCH performing arts programs, the Annex will serve the community via concerts, theater, screenings and other cultural events, and also provide a venue for town hall meetings and nonprofit convenings of all kinds.

Over the next year we expect to make a dent in our waiting list by enrolling an additional 100 teens and a few dozen more littles and middles, too (now that there's more room on the main campus).

The Bridge also includes much needed work and storage space for our operations and facilities teams!

THANK YOU to our major donors:

Ahmanson Foundation, Florence and Serge Azria, Marion Brucker Legacy Trust, Leslie and Richard Frank, Good News Foundation, Michelle and Cyrus Hadidi, HOK Architecture, Gail and Robert Israel, LA City Facade Project, Neighborhood Improvement Fund, Jeanne and Anthony Pritzker, Joseph Sherwood, The Skylight Foundation, Faith Strong, The Theodore J Forstmann Charitable Trust, Transformation Trust, W.M. Keck Foundation. Next up, we are building a new lobby/entrance and restrooms on our main campus.

Please come visit APCH – the tour will take a little longer now... and you can sign up at www.eventbrite.com/e/apch-monthly-tour-tickets-17235550997

MESSAGE FROM THE BOARD CHAIR



Every year as summer winds down and the new school year approaches I get energized by all the great things happening at APCH. From the looks

on the faces of over 1300 young people receiving backpacks full of school supplies, to anticipating the opening of The Bridge, our much needed new center across the street that will house our Bridge to the Future/Teen program and performing arts center, I see the results of my fellow Board members' and our staff's commitment to this amazing agency.

Our Board worked hard this summer to update our mission statement and prepare and approve a new 3-year strategic plan. The primary goals of this plan include:

*Offering additional services to support a larger number of young people in our community

*Assisting APCH members to participate meaningfully in defining the future of their neighborhood

*Codifying our methods for long term organization sustainability, effectiveness and replicability of APCH

I'm confident that our Board, along with APCH's strong leadership team and staff and our involved parents and community members, will be able to accomplish these goals and continue to meaningfully impact the lives of those we serve.

In Service,

Dawn Taubin

APCH BOARD WELCOMES A NEW DIRECTOR!



Welcome **Gareth Schweitzer**, a business strategist and co-founder of Kelton Global, a consultancy firm that helps businesses make better business decisions through understanding what makes human beings tick and developing services in response. He is a former journalist that covered the White House and Capitol Hill, and he was an embedded correspondent in Iraq.

Thank you to all of our Directors for sharing your incredible passion and talents with A Place Called Home!

Interested in learning more about serving on our Board of Directors? Please email our Executive Director: jonathan@apch.org

YOUTH VOICES

What's my name?
My name is Mauricio.
Why did they give me this name
because of my favorite uncle.
Who gave me this name
my wonderful mother.
I would be red
Why bcuz red is a color you feel
like when you are in love
but when your love dies

you also feel red
but in a different red.
I would be a circle.
Bcuz a circle is round or like a life
cycle it starts and it always ends.
Also a circle will go on forever.
My movement is unusual probably
to most people but I don't care.
My movement is running blindly bcuz
I expect the unexpected

and when it does come
I won't be affected by it a lot
also I don't look back
in regret of anything
just live your life like it's the last.
A whisper, why because
you can't hear it much
but it says a lot.

— Mauricio



Last year, we served **more than 1000 youth**,
8-21 years of age, and **thousands more family and community members**
through **distributions of food, school supplies,**
dental and medical services, volunteer days,
movie screenings and Holiday Festivals.

LEADERSHIP

Jonathan Zeichner, *Executive Director*
Debrah Constance, *Founder*

BOARD OF DIRECTORS

Dawn Taubin, *Chairman*
Barbara Glazer, *Co-Vice Chair*
Cyrus Hadidi, *Co-Vice Chair*
Melissa Palazzo-Hart, *Treasurer*
Barbara Arnold, *Secretary*

Doug Atchison
Sue Brucker
Dawn Campbell
Sister Patricia Connor, *RSHM*
Allison Copes
Stephanie Goldstine
Louise Hamagami
Robert Israel
Robyn M. Mattison
Alan Melina
Julie Pilat
Amanda Plisner
Walter Richardson
Gareth Schweitzer
Howard Sherwood
Stephanie Sherwood
Hamed Tavajohi
Sandy Walia
Marshall Wax
Maryellen Zarakas

LIFETIME DIRECTORS

Robert Davidow
Peter M. Gilhuly, *ESQ.*
Kenneth Karmin
Bruce Newberg
Stephen Winston

LEADERSHIP COUNCIL

Alison Copes, *Co Chairman*
Amanda Plisner, *Co Chairman*
Maya Shah, *Vice Chair*
Marshall Smith, *New Membership Officer*
Jillene Bridrijo-Dietl, *Secretary*

Kristen Appelbaum
Chris Ceccotti
Christine Cheung
Danielle Djansezian
Sarah Duru
Marni Glick
Seana Johnson
Sean Hamidi
John Phillips
Prophet
Leana Revekko
Josh Russak
Ethan Smith
Garrett Torres
Maggie Venneri
Hayley Wood
Justin Woodhull



2016 - 2017 CALENDAR OF EVENTS

OCTOBER 28

Fall Festival & Halloween Party

NOVEMBER 17

APCH Gala For The Children (s)

NOVEMBER 19

Thanksgiving Food Sorting (v)

NOVEMBER 23

Community Thanksgiving Dinner & Grocery Distribution (v)(s)

DECEMBER 9

Tree Lighting Ceremony & Movie Night

DECEMBER 10

Adopt-A-Family (v)(s)

DECEMBER 16

APCH Home For The Holidays Prep And Setup (v)

DECEMBER 17

Home For The Holidays A Festival Of Free Gifts For Hundreds Of Families (v)(s)

(v) volunteer opportunities available. Please contact us at volunteer@apch.org
(s) sponsorship opportunities available, please contact us at sponsor@apch.org

JANUARY 8

Jive Live New Years Run
sign up at: <http://tinyurl.com/zmx7mrr>

MARCH 9

Stars & Strikes Celebrity Bowling Tournament (s)

MARCH 18

Volunteer Awards Ceremony



APRIL 7 & 8

Cinderella & Prince Charming Pay It Forward Project (v)(s)

APRIL 22

Health & Garden Expo (v)(s)

TBD

Big Sunday (v)

MAY TBD

GirlPower Awards Luncheon & Boutique (s)



AUGUST TBD

Back To School Distribution (v)(s)

SEPTEMBER TBD

USC Dental Clinic at APCH (v)(s)



JOIN THE APCH FAMILY - Your donation provides direct support to youth of South Central Los Angeles

A Place Called Home is a 501(c)(3) Non-Profit Corporation - Non-Profit Tax Identification Number 95-4427291. Charity Permit on File.

- \$35 Provides a child with sports, fitness, yoga and good sportsmanship activities for one month
- \$55 Provides fresh cooked nutritious dinners and snacks for one child for one month
- \$100 Provides tutoring for one elementary or middle-school child who is struggling to keep up at school for a month
- \$250 Provides weekly gardening classes and supplies for 25 students
- \$500 Provides a summer field trip for 50 children
- \$1000 Provides Academic Guidance/College Prep for 15 teenagers for one month
- \$3500-\$6000 Provides tuition support for a young person who will be attending the first in his/her family to attend college

☐ \$35 ☐ \$50 ☐ \$100 ☐ \$250 ☐ \$500 ☐ \$1,000 ☐ \$1,500 ☐ \$2,500 ☐ \$5,000 ☐ Other \$ _____

☐ I want to Keep On Giving: Please make automatic monthly donations of: \$ _____ with my credit card

☐ or I have included a voided check

☐ I am interested in joining the \$10,000 Circle of Friends. Please contact me at _____

Payment method: ☐ Check ☐ MasterCard ☐ Visa ☐ AmEx ☐ Discover

(Please make check payable to: **A PLACE CALLED HOME**, 2830 South Central Ave, Los Angeles, CA 90011)

Name on credit card: _____ Card #: _____ Exp: ____/____/____

Address: _____ City: _____ State: _____ Zip: _____

Phone: _____ Email: _____

☐ Please make this gift in memory/honor of: _____

☐ My company will make a matching gift, I have enclosed the form

☐ Please do not include my name in any list of published donors

☐ I want to know about volunteer opportunities at APCH. Please contact me at _____

☐ I am interested in including APCH in my estate plan. Please contact me at _____

☐ I am interested in contributing to the APCH Endowment. Please contact me at _____

CHANGING THE WORLD STARTS AT HOME - THANK YOU FOR YOUR INVESTMENT IN OUR YOUTH!

Visit apch.org for all the details, full calendar of programs and activities, and information on how to get involved.

Brighten the lives of families in need throughout the year and for the holidays!



Learn more about our annual Adopt-A-Family program by visiting apch.org/adopt-a-family



Scan this code to watch the APCH Video on your mobile device